

Master of Landscape Architecture

The Department of Landscape Architecture
The Faculty of Architecture and Planning
King Abdulaziz University

Version 2024-25

CONTENTS

1-Introduction	
Overview	03
Department vision, mission, values	05
Master of Landscape Architecture	08
Overview	08
Program Mission	09
Program Goals	09
Program Objectives	09
Education (Teaching and Learning)	09
Scientific Research	09
Community Engagement	09
Development and Quality	09
Design	09
Graduate Attributes	10
Knowledge	10
Research	10
Communication	10
Community Ethics	10
2- Career Opportunities	14
3- Academic Program	15
Admission Requirements	15
Graduation Requirements	15
Curriculum	16
Master of Landscape Architecture (Coursework and research project)	16
Program Learning Outcome	19
Course Description	20
4- Research Project	30
Master of Landscape Architecture	30
Overview	
Regulation and Procedures for Scientific Supervision of Research Project	31
5- Department Committees	33
6- Services & Common Facilities	35
7- Staff and Faculty Members	36
MLA Program Coordinator:	36
8- KAU Graduate Studies Manual	37
9- University Student Regulations, Rights and Responsibilities	37
10- Complaints and Grievances	37

1-Introduction

Overview

The Department of Landscape Architecture (DLA) was established in 1976 (1396 AH) as part of the School of Environmental Design at the Faculty of Engineering (today Faculty of Architecture and Planning), offering the first bachelor program in Landscape Architecture in Saudi Arabia and the Middle East. The program was created with the collaboration of Harvard University faculty members. Since then, the vision of the DLA at King Abdulaziz University (KAU) has been to become a pioneering school in the science and art of landscape architecture in the region, contributing to the understanding, formation, improvement, and protection of the natural, human, and built environments imbued with Islamic values and identity.

Today the department offers two professional degrees: Bachelor of Landscape Architecture (BLA) and Master of Landscape Architecture (MLA).

Our department is constantly evolving and adapting to address the needs and challenges of the 21st-century society and environment. Our mission is to equip students, through education, research, creative work, and community engagement, with necessary skills and knowledge to succeed in their professional careers and become exemplar leaders in the field of Landscape Architecture.

Landscape architecture is the science and art of planning, designing, managing, and creating open spaces for the built and natural environment to ensure their sustainability for future generations. The discipline covers a broad array of project types and scales, including but not limited to: public gardens and parks, urban design and planning, recreation and resorts, street furniture, green infrastructure, water management, historic preservation and restoration, forestry, and natural reserves.

We encourage our students to be responsible and creative designers with a commitment to make profound and lasting contributions to Earth and its inhabitants. We inspire our students to be leaders in the field of Landscape Architecture and contribute to solving complex issues related to climate change, infrastructural landscapes, water management, cultural heritage sites, environmental justice, urban spaces, quality of life, human and ecosystem health, and other issues that may arise that require thoughtful and innovative solutions. We urge our students to interact and work with the local communities and institutions to provide guidance and resolve various issues related to the built



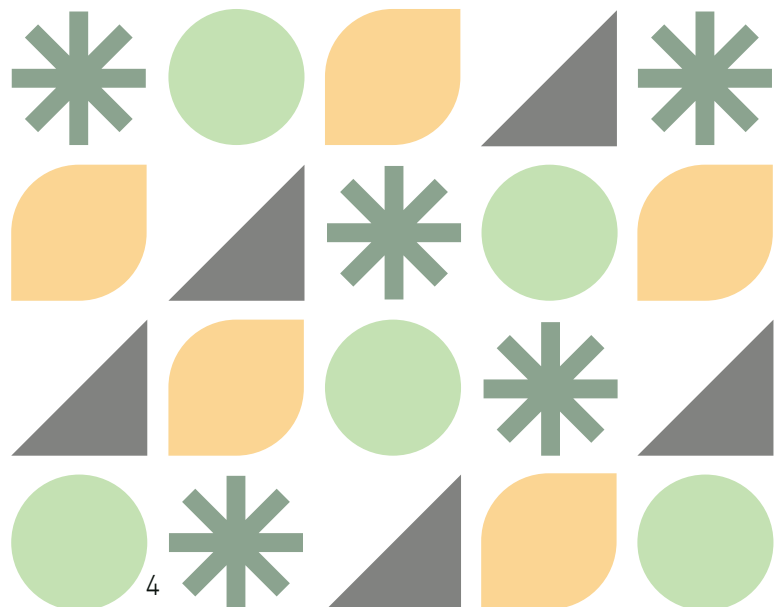
and natural environments. We expect our graduates to engage in continuing learning and demonstrates high ethical standard in order to advance professionally.

Many of our graduates joined leading design firms; others work in local municipalities, community development, government, and education. For some, the study of landscape architecture leads to more specialized areas such as heritage management, historic preservation, and urban design. Other graduates found new careers in related fields such as planning, architecture, interior design, and project management. We are proud of all our graduates, many of whom are contributing to realizing the Saudi vision 2030 programs at projects such as NEOM, the Red Sea project, Diriyah Gate Development, The Riyadh Green project, World Heritage inducted Historic Jeddah, Jeddah Downtown, Jeddah Waterfront, Jeddah F1 Grand Prix Circuit, South Obhur Corniche and many more.

The faculty members of the department are prominent for extensive scholarly, professional, and expertise including community and urban design, ecological and sustainable design, architectural and landscape history, theory and methods, cultural heritage, historic preservation, urban management and assessment, plants and natural biodiversity. Such diverse specialties contribute to a dynamic educational environment and inspire students to work in various landscape architecture projects. Our faculty members have an outstanding records and contribution in some of the most significant projects in Saudi Arabia including the development of the two holy mosques in Makkah and Madinah, Historic Jeddah, Wadi Alaqeeq restoration project, Visual pollution assessment of Alsoudh Mountain in Aseer region.

The faculty and students won many local and international design competition such as Prince Sultan bin Salman Award for heritage, Nature Reserves and Eco-lodge design competition, Urban design competition for Jabal Omar in Makkah and recently the department won the Landscape Middle East Award 2023 and the first place on the international design competition "University within A Park".

We welcome all creative minds who strive to make a lifelong contribution to Earth and its inhabitants.



Department vision, mission, values

Vision

To be a pioneering department in the sciences and art of landscape architecture, contributing to the understanding, formation, improvement and protection of the natural, human, and built

Mission

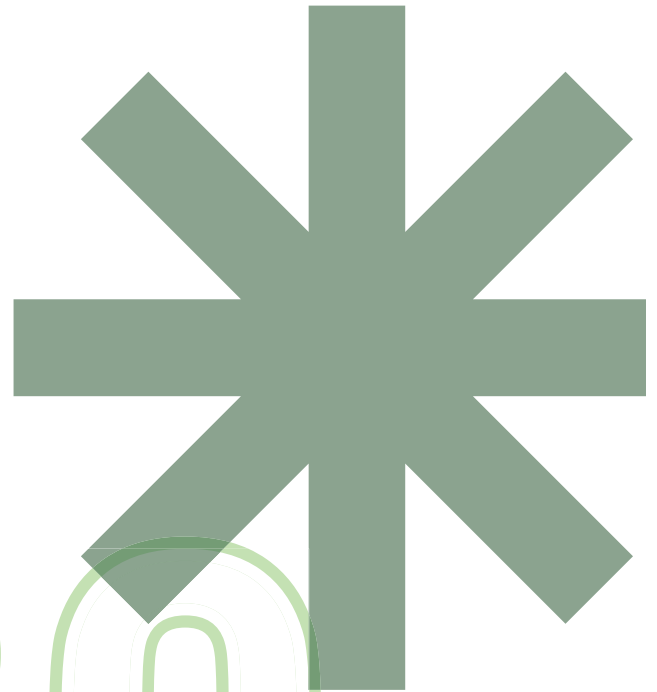
To educate and prepare students through advance study, research and innovative design practices to become creative and visionary leaders within the landscape Architecture profession.

Goals

- 1- Develop and Improve academic programs
- 2- Obtaining and maintain academic accreditation
- 3- Develop the skills for faculty and support staff
- 4- Produce competitive and competent graduates
- 5- Promote scientific research and empower innovation
- 6- Raising a culture of volunteering and community involvement
- 7- Maintain a sustainable source of funding

Values

- 1- Respect
- 2- Humanity
- 3- Excellence
- 4- Innovation
- 5- Leadership
- 6- Creativity
- 7- Professionalism



2030

Figure 1: Consistency of the landscape architecture department mission statement with the FAP and KAU mission statements.

	LAD Mission	FAP- Mission				KAU-Mission				
		Enriching educational and research	Excellence in academic programs & research fields	Providing qualified professional cadres	Enriching the sciences & arts of Env. design through the development of educational programs and scientific research	Knowledge development	Research	Innovation	Entrepreneurship	Community Res.
1	Education									
2	Research									
3	Creative Work									
4	Community Engagement									
5	Leadership									

Figure 2: Consistency of the landscape architecture department's goals with the department, faculty and University mission statements.

	LAD Goals	LAD Mission					FAP- Mission				KAU-Mission				
		Education	Research	Creative Work	Community Engagement	Leadership	Enriching educational and research environmental design sciences	Excellence in academic programs & research research fields	Providing qualified professional cadres	Enriching the sciences & arts of Env. design through the development of educational programs and scientific research	Knowledge development	Research	Innovation	Entrepreneurship	Community Responsibility
1	Improve academic programs														
2	Obtaining and maintain academic accreditation														
3	Develop the skills of academic and support staff														
4	Produce competitive and competent graduates														
5	Promote scientific research and empower innovation														
6	Raising culture of volunteering and community involvement														
7	Provide and Maintain a sustainable source of funding														

Master of Landscape Architecture

Overview

The Master of Landscape Architecture (MLA) program at King Abdulaziz University (KAU) was established in 2020. The MLA is a two-year, research project-based program consisting of a total of 44 credit hours. The curriculum focuses on enhancing students' practical skills and knowledge of the art and science of landscape architecture through discipline-specific courses, studios, and elective courses.

The foundation of the MLA curriculum is a series of three intensive design studios. The first studio covers the relationship between urban design and landscape architecture by studying and designing urban projects at the neighborhood level or city centers. The second studio is designed to encourage students to engage in research at different scales, types, and methodologies, both in natural and urban areas. The last studio introduces students to design methods and concepts with a focus on the participation of society and its demands on the urban environment at the city level. The studio format involves various teaching techniques, including lectures, demonstrations, field trips, readings, one-on-one instruction, and group discussions. The studio typically consists of a small group of students, providing an engaging and personalized environment for both students and faculty.

The MLA curriculum also includes two courses in Landscape Architecture trends and Landscape Ecology, along with several elective courses designed to provide students with the necessary skills and knowledge that will be integrated into the design studios to support the design process and solutions. Research is an important component of the MLA curriculum, and students are required to take two courses where they develop their final research project under the supervision of their instructors.



Program Mission

To prepare visionary leaders through immersive design studios, research and advance study, fostering innovative solutions that enhance and protect our natural and built environment

Program Goals

Education (Teaching and Learning)

- Regular evaluation, improvement, and development of the MLA program.
- Develop study plans and teaching strategies to achieve the learning outcome.
- Enhance MLA student's creativity, leadership and professional skills in the field of Landscape Architecture.

Scientific Research

- Enriching scientific publishing in ISI journals at the level of the staff members and students

Community Engagement

- Promote volunteerism among students and faculty members of MLA.
- Develop community engagement initiatives to strengthen the connection between the department and the local community.

Development and Quality

- Obtain and maintain national and international academic accreditation for the Master program in landscape Architecture.
- Raising the efficiency of the Academic staff and administrative staff at the department.
- Develop the technical and academic skills of the faculty members in MLA program.

Program Objectives

- Students are expected to be proficient or above in each of these areas by the time they graduate from the program.

Design:

- Students will be able to use the most relevant and up-to-date methodologies, tools, and technologies in landscape Architecture to develop their complex problem-solving skills to tackle the critical questions facing contemporary cities and landscapes.

Students will be able to use the most relevant and up-to-date methodologies, tools, and technologies in landscape Architecture to develop their complex problem-solving skills to tackle the critical questions facing contemporary cities and landscapes.

Knowledge:

Students will be able to critically analyze and apply histories, theories, ethics, and practices of landscape design, as well as its function in reflecting and reshaping culture and environments.

Research:

Students will be able to understand and apply suitable research methods for design and scholarship in landscape architecture.

Communication:

Students will be able to effectively communicate ideas on topics covered by the professional curriculum to a range of audiences by speaking, writing, creating, and using suitable representational media.

Community Ethics:

Student will be able to critically examine the local and global implication of social issues, various cultures, economic systems, ecological systems, and professional practice.

Graduate Attributes

The Landscape Architecture department is known for its excellence in teaching, research, creative design work and community involvement that are all geared to produced competitive graduates with the following attributes:

1. Creative and critical thinking, and problem solving
2. Teamwork and communication skills
3. Professionalism and leadership readiness
4. Digital and technical capabilities
5. Valuing Diversity
6. Confidence and adaptability

Figure 3: Consistency of the Landscape Architecture graduate program mission with the FAP and KAU mission

	LAD Goals	LAD Mission					FAP- Mission				KAU-Mission				
		Education	Research	Creative Work	Community Engagement	Leadership	Enriching educational and research environmental design sciences	Excellence in academic programs & research research fields	Providing qualified professional cadres	Enriching the sciences & arts of Env. design through the development of educational programs and scientific research	Knowledge development	Research	Innovation	Entrepreneurship	Community Responsibility
1	Outstanding comprehensive application of scientific knowledge														
3	Technical, creative and critical thinking skills														
4	Produce graduates who will become responsible, ethical, and contributing leaders														
5	Lifelong learning skills														
6	Community Involvement														

Figure 4: Consistency of the graduate program goals with the LAD and FAP mission.

MLA Goals	LAD Mission					LAD Mission					FAP- Mission			
	Scientific knowledge	Technical, creative and critical thinking skills	Produce responsible graduates leaders	Lifelong learning skills	Community Involvement	Education	Research	Creative Work	Community Engagement	Leadership	Enriching educational and research	Excellence in academic programs & research fields	Providing qualified professional cadres	Enriching the sciences & arts of Env. design through the development of educational programs and scientific research
Education														
Research														
Community														
Development														

Figure 5: Consistency of the LAD graduate attributes with KAU graduate attributes

KAU graduate attributes	LA Program graduate attributes
Creative and critical thinking	Creative and critical thinking, and problem solving
Team working Communication English Proficiency	Teamwork and communication skills
Leadership and professionalism Discipline Excellence Lifelong learning	Professionalism and leadership readiness
Technological learning	Digital capabilities
Cultural competency	Valuing Diversity
Resilience and adaptation Independency and proclivity	Confidence and adaptability



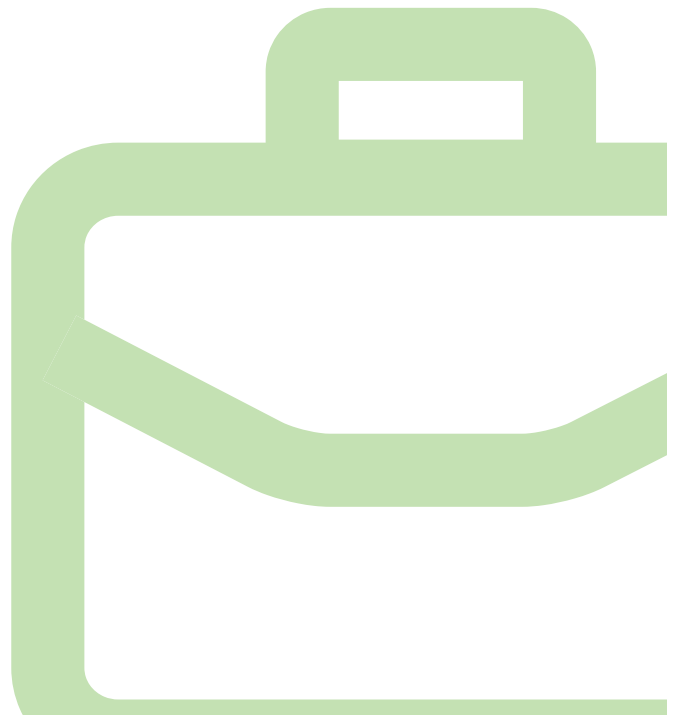
2- Career Opportunities

Graduates of the Master's program in Landscape Architecture at King Abdulaziz University in Saudi Arabia have exceptional career prospects in both the private and public sectors. Within the private sector, there is a growing demand for landscape architects within design firms, construction companies, and real estate development entities. These graduates possess the ability to contribute their expertise to an array of projects, encompassing residential developments, commercial complexes, parks, resorts, and urban revitalization initiatives. Their invaluable knowledge in sustainable design, site planning, horticulture, and project management allows for the creation of aesthetically pleasing and functional outdoor spaces, which aligns with the overarching objectives of Vision 2030 and its programs pertaining to the environment, tourism, heritage, society, and the economy.

In the public sector, landscape architects find opportunities in government agencies, municipal corporations, and urban planning departments. They play a vital role in shaping the public realm, designing parks and recreation areas, streetscapes, and public infrastructure projects. Their skills are crucial in creating sustainable and resilient cities, integrating nature into urban environments, and promoting environmental stewardship.

Furthermore, graduates of the Master's program may also explore research and academia as career paths. They can contribute to the advancement of landscape architecture through innovative research, publish scholarly articles, and participate in national and international conferences.

Overall, the Master's program in Landscape Architecture equips graduates with the necessary skills and knowledge to excel in various professional settings. The demand for qualified landscape architects is on the rise in Saudi Arabia and its Vision 2030, offering abundant career opportunities in the private and public sectors, as well as in research and academia.



3- Academic Program

The department of Landscape Architecture at King Abdelaziz University offer master's degree in landscape architecture for both Males and Females.

Graduate Attributes

King Abdulaziz University General requirement:

- The applicant must be a Saudi, or on an official scholarship for postgraduate studies if he is not a Saudi.
- The applicant for higher diploma, executive, professional, or applied master's programs must have a bachelor's degree from a Saudi university or another recognized university.
- The applicant for academic master's programs must have a bachelor's degree with a general grade of no less than good from a Saudi university or another recognized university.
- The applicant must have the required score in the general aptitude test for university graduates (65) as a minimum for academic programs.
- Provide the employer's approval to study if he is an employee for programs offered during official working hours.

Landscape Architecture Department Requirement:

- Holding a bachelor's degree in landscape architecture, Architecture or Urban & Regional Planning with a Minimum Grade 75% (3.5/5) or equivalent, from a Saudi university or another recognized university.
- English Language proficiency test result: IELTS 3.5 or its equivalent in TOFEL) If the applicant graduated from a program based in an English-speaking country the test result can be waived.
- Permission letter from the applicant's employer. In case if the applicant is not an employee, an official printed report from the ministry of interior is required (For KAU
- staff the applicant must check the university rules and regulations)
- Portfolio
- Two letters of recommendation.

Graduation Requirements

Master of Landscape Architecture (Coursework and research project)

To obtain master's degree from the department, the student should successful complete 44 credit as followed:

Compulsory courses:	27
Elective Courses:	3
Internal Elective Courses:	6
Free Courses:	3
Research Project:	5
<hr/>	
Total Credit	44

Curriculum

Master of Landscape Architecture Program Plan

Year	Semester	Course code	Course Title	Credit Hours
1st	First	LA 601	Advanced Landscape Architecture Studio (1)	6
		LA 604	Advanced Trends in Landscape Architecture & Advanced Islamic Environment Design	3
		Elective	Elective course	3
	Second	LA 602	Advanced Landscape Architecture Studio (2)	6
		LA 636	Landscape Ecology	3
		Elective	Elective course	3
2nd	First	LA 603	Advanced Landscape Architecture Studio (3)	6
		LA 694	Approach to Graduation Project	3
		Internal Elective	Internal Elective course	3
		Free Course	Free course	3
	Second	LA 698	Research Project	5
Total credit hours				44

Compulsory Courses:

Course code	Course Title	Credit Hours
LA 601	Advanced Landscape Architecture Studio (1)	6
LA 602	Advanced Landscape Architecture Studio (2)	6
LA 603	Advanced Landscape Architecture Studio (3)	6
LA 604	Advanced Trends in Landscape Architecture & Advanced Islamic Environment Design	3
LA 636	Landscape Ecology	3
LA 694	Approach to Graduation Project	3

Elective Courses:

Course code	Course Title	Credit Hours
LA 620	Advanced Landscape Planning	3
LA 621	Design Philosophy, Theory and Application	3
LA 622	Innovative Interdisciplinary Design	3
LA 623	Landscape Sustainability	3
LA 624	Pioneers of Landscape Architecture Trends and Concepts	3
LA 625	Public Art and Landscape Architecture	3
LA 626	Sustainable Communities	3
LA 627	Sustainable Tourism	3
LA 629	Advanced Interior Landscape Design	3
LA 630	Advanced Applications of GIS in Landscape Architecture	3
LA 631	Advanced Computer Applications in Landscape Architecture	3
LA 632	Advanced Site and Infrastructure Engineering	3
LA 633	Comprehensive Perspective of Land Reclamation	3
LA 634	Environmental and Visual Plant Characteristics in LA.	3
LA 635	Environmental Impact Assessment	3
LA 637	Project Management in Landscape Architecture	3
LA 639	Special Studies in Landscape Architecture	3
LA 640	Advanced Professional Practice in Landscape Architecture	3
LA 641	Advanced Professional Directions in Landscape Architecture	3

Internal Elective Courses:

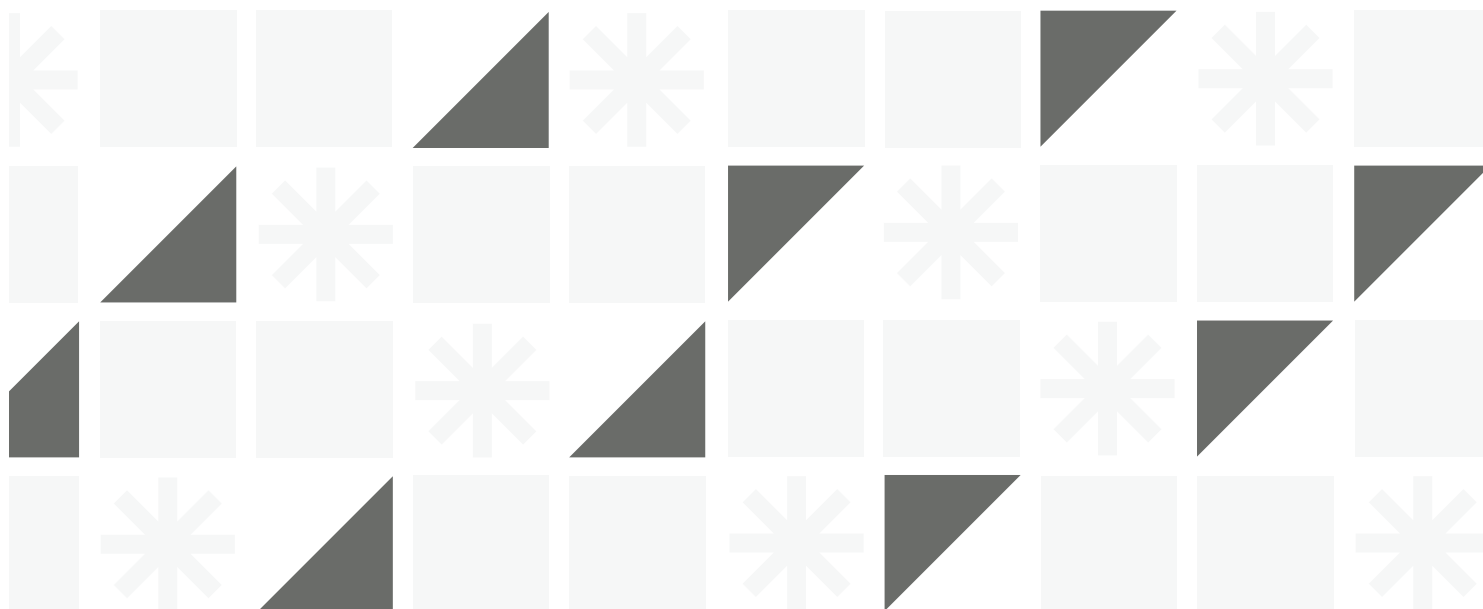
Course code	Course Title	Credit Hours
AR 610	Advanced Architectural Theory and Criticism	3
AR 620	Urban Design: Principles and Techniques	3
AR 621	Eco-Architecture	3
AR 624	Islamic Built Environment	3
AR 626	Theories and Techniques of Conservation	3
URP 600	Planning-Theory and Process	3
URP 613	Management of Urban Development	3
URP 623	Regional Development Policy	3

Free Courses:

Course code	Course Title	Credit Hours
*** 6**	Any free graduate level course outside the FAP	3

Research Project:

Course code	Course Title	Credit Hours
LA 698	Research Project	5



Program Learning Outcome

Knowledge and Understanding

K1	Understand a comprehensive and specialized body of knowledge related to theories, principles, and concepts in the field of Landscape Architecture.
K2	Demonstrate critical knowledge and understanding of processes, techniques, practices, and terminology relevant to Landscape Architecture.
K3	Acquire advanced knowledge and understanding of a wide range of established and specialized research techniques in the field of Landscape Architecture.

Skills

S1	Apply specialized theories, principles, and concepts of landscape architecture in both built and natural environments.
S2	Develop innovative solutions to complex and current issues and problems within the field of landscape architecture in diverse and advanced built and natural environments.
S3	Conduct advanced research or professional projects using specialized research methodologies and inquiry techniques in Landscape Architecture.
S4	Effectively communicate knowledge, skills, research findings, and innovative ideas related to Landscape Architecture to both specialist and non-specialist audiences through various forms of communication.
S5	Analyze and interpret data and information quantitatively and/or qualitatively in complex and advanced built and natural environments within the field of Landscape Architecture.
S6	Select, utilize, and adapt advanced digital technologies and information and communication tools for design and research purposes in Landscape Architecture.



Values, Autonomy, and Responsibility

V1	Demonstrate integrity and uphold professional and academic values when addressing various issues within the field.
V2	Initiate strategic planning for learning and/or work, engage in professional development, and actively participate in academic and/or professional decision-making processes with a high level of autonomy.
V3	Efficiently manage specialized tasks and activities in the field of Landscape Architecture with a high level of autonomy.
V4	Collaborate effectively and actively participate in research or professional projects or groups, assume leadership roles, and take full responsibility for the work.
V5	Contribute to enhancing the quality and sustainability of community life and fostering a sense of community well-being.

Course Description

LA 601: Advanced Landscape Architecture Studio (1)

Credit hours: 6

Course Description:

This studio covers the relationship between urban design and landscape architecture through studying and designing urban projects at the neighborhood level or city centers. These projects will introduce the vocabularies of urban design and show the relationship between landscape architecture and urban design, highlighting the role of the economic factor using different urban model for each alternative. Students will gain from this course the necessary skills to design projects with several alternatives and later to compare them and select the closest alternative to the optimal solution.

LA 602: Advanced Landscape Architecture Studio (2)

Credit hours: 6

Course Description:

This studio is designed to encourage students to practice research at different scales, types, and methodologies, in both natural and urban areas. This will enable students to develop their knowledge in planning theories, critique, and application of contemporary theories in landscape planning. Students will earn ample experience in structuring landscape planning projects, adopt and develop an appropriate planning methodology, and advance their skills in computer applications in landscape planning. and develop an appropriate planning methodology, and advance their skills in computer applications in landscape planning.

LA 603: Advanced Landscape Architecture Studio (3)

Credit hours: 6

Course Description:

The studio aims to introduce students to the design methods and concepts with the participation of the society and its demands on the urban environment level of cities. That comes through social, economic, political, human, and environmental influences, which have a direct reflection on the establishment and development of societies. By the end of the course students will have the ability to integrate theories and concepts of landscape architecture with societal considerations, to emphasize on practices and practical side in the design process and to evaluate community participation processes and their reflection on the environment and societal development.

LA 604: Advanced Trends in Landscape Architecture & Advanced Islamic Environmental Design

Credit hours: 3

Course Description:

This course aims at subjecting the student to the philosophical, design, and technological contemporary products in the field of landscape architecture. This exposure is through

knowledge of its driving ideas, design-method innovations, and construction techniques. The student will accumulate theoretical and visual base of ideological trends of landscape architecture designs, and its special outcome innovations. The course will also cover the following knowledge objectives: Background review, especially issues covered in the Bachelor program course LA-483 "Towards Isl. Env. Des."; Approaches towards values in Env. Des.; Moral responsibility of the environment. Designer, especially in an Islamic Context; Approaches towards the "references" in Isl. Env. Des.; the roles of identity, heritage and modernity; Review of current "Models" (theory and application); Gaps demanding further research and innovation; To enable the student to consciously decide and design in landscape architecture in an Islamic. context.

LA 620: Advanced Landscape Planning

Credit hours: 3

Course Description:

This course aims to introduce students to the advanced approaches of ecological and landscape planning in a theoretical framework, and acquaint them with the concepts, methods and processes for identifying, analyzing and assessing natural resources, and their importance in designing processes and policy development to address environmental issues in a larger context. It will develop student's ability to perform investigations on existing ecological (life processes in the landscape), geological and social conditions as a base to achieve the desired outcome of the landscape planning process.

LA 621: Design Philosophy, Theory and Application

Credit hours: 3

Course Description:

This course aims at exposing the students to design philosophies and concepts affecting the profession, and whether in landscape design, site planning or landscape planning, with emphasis on the intellectual basis. Students will acquire knowledge of the philosophies within the field and their origins.

LA 622: Innovative Interdisciplinary Design

Credit hours: 3

Course Description:

The course aims to cover the following knowledge objectives: Justification for interdisciplinary approaches in general, and relationships to innovation; Importance of landscape issues in interdisciplinary design; Innovative landscape/ urban design; Innovative landscape/ architectural design; Innovative landscape/ public art design; Enabling the student to contribute and choose in future directions.

LA 623: Landscape Sustainability

Credit hours: 3

Course Description:

This course aims at introducing the concepts, ethics, practices and policies of landscape sustainability with its three pillars: natural, social, and economic, in relevance to various scales in Landscape Architecture. By the end of the course, students will have a better understanding of terminologies of sustainability, in addition to awareness of various schools of thought within the environmental ethics. Also, students will have understood sustainability's social and economic dimensions, and looked into the most important relevant international, regional and local agreements and policies. Finally, the student will have acquired a better knowledge of the professional role that a Landscape Architect has to play, to contribute to landscape sustainability.

LA 624: Pioneers of Landscape Architecture – Trends and Concepts

Credit hours: 3

Course Description:

This course aims at introducing students to the historic, contemporary and present time pioneers of Landscape architecture, not only in Western countries, but also in Eastern and South American, including developing countries. Pioneers works are analyzed in terms of representing trends and concepts, possible evolution of the work of the pioneer, as a reflection of his intellectual evolution and the evolution of his context, in terms of time and place. It is hoped that the students, based on the above, would acquire a higher ability to develop their intellectual and design directions.

LA 625: Public Art and Landscape Architecture

Credit hours: 3

Course Description:

The course gives students a complete theoretical background of public art: art roots, ideologies of different times, material, techniques, productions, and communities of different ideologies produced through history. Students, through this course, will develop their mental and perceptual cognition to a decent level of visual interpretation of different elements, in the natural and cultural landscapes, and to transform this cognition into language, i.e. legible meaningful thoughts.

LA 626: Sustainable Communities

Credit hours: 3

Course Description:

This course covers the following knowledge objectives: Issues, scales and scopes of sustainability; Clarification of biological versus socio-economic and cultural issues in sustainability; The special importance of the scale of a community encompassing natural, human and man-made environments within the hierarchy of scales of sustainability; Renewable energies, including solar, wind and biological systems and techniques in sustainable communities; most importantly is for the student to comprehend theoretical and applied models, with special emphasis on contexts corresponding to those in Saudi Arabia.

LA 627: Sustainable Tourism

Credit hours: 3

Course Description:

This course offers the bases for understanding sustainable tourism, focusing on theoretical aspects at the global level in general, and at the local level in particular. Through this course, the student will acquire wider knowledge about the environmental, the economic and the social pillars of sustainable tourism, and will recognize its variety as eco-tourism, alternative tourism, or tourism in protected areas. Also, he will be equipped with the necessary tools that help eco-tourism planners, conservationists, businessmen and communities, to work together in order to develop eco-tourism plans and products, that attract and accommodate eco-tourists while conserving natural resources and benefiting local communities.

LA 629: Advanced Interior Landscape Design

Credit hours: 3

Course Description:

The course aims to develop the students' ability to design indoor spaces as an extension of outdoor spaces, in an integrated form, from the point of view of landscape architecture. The course elaborates the study of interior spaces, and their integration with the outdoor environment through analyzing philosophical aspects, functional and visual factors of design, taking into consideration the environment and culture of the user. It will demonstrate the importance of studying indoor climate, materials, architectural elements and plants appropriate to the indoor environment taking into consideration maintenance, operation and sustainability aspects.

LA 630: Advanced Applications of GIS in Landscape Architecture

Credit hours: 3

Course Description:

This course aims to introduce students to the advanced topics in geographic information systems (GIS). These include visualizing spatial data, perform raster analysis, create and analyze three-dimensional surfaces, perform watershed delineation, suitability analysis and network analysis. The students will learn the advanced spatial analysis and the implementation and management of GIS projects as well as the application of Geodesign.

LA 631: Advanced Computer Applications in Landscape Architecture

Credit hours: 3

Course Description:

This course is designed to teach students the use of digital media as tools, which assist in creative and artistic design conceptualization, unlike the traditional usage which considers such tools for mere drawing and presentation. During this course, the student will interchangeably use digital and physical media as tools for abstract and creative spatial design through employing solids and voids, light, shadow, motion, color, transparency, sound, ...etc. The student will also learn a methodology inspired by the tradition of the Bauhaus principles of craftsmanship and visual perception, and will acquire new artistic skills that enhance his creativity in spatial design.

LA 632: Advanced Site and Infrastructure Engineering

Credit hours: 3

Course Description:

This course aims at acquiring students' basic concepts and skills of site engineering and infrastructure requirements. This includes site analysis and assessment, techniques of grading and earthwork calculation, storm water management and design of storm water drainage systems. It also includes techniques of horizontal and vertical road alignment. Computer program applications are used whenever possible.

LA 633: Comprehensive Perspective of Land Reclamation

Credit hours: 3

Course Description:

This course covers the following knowledge objectives: Historic roots of land reclamation in Western and Islamic societies; Issues of environmental processes and form in relation to land reclamation; Land reclamation in strip mining sites; Land reclamation in Quarries; Desert land reclamation, with special emphasis on coastal deserts; Urban sewage waste treatment and recycling in land reclamation, especially desert reclamation; Urban solid waste treatment and recycling in land reclamation, especially desert reclamation, and in conclusion to enable the student to practice professionally contemporary land reclamation issues related to "Urban Ecosystem", socio-cultural issues and aesthetics.

LA 634: Environmental and Visual Plant Characteristics in Landscape Architecture

Credit hours: 3

Course Description:

This course aims to study environmental and visual characteristics of introduced and native plants in urban and naturalized landscapes. It will provide the chance to the student to explore ecological, technical, and esthetic values for selecting plants to meet landscape architectural project requirements.

LA 635: Environmental Impact Assessment

Credit hours: 3

Course Description:

The environmental impact assessment (EA) course acquaints students the theoretical knowledge and the practical ability to predict the damages and environmental effects that may result from the construction of projects. It introduces them to the procedure of evaluating and rating these effects, and the necessary preventive measures to mitigate, follow-up and monitor them. It will introduce the necessary skills to apply methods and models that support the evaluation process through the development of assessment tools and intervention in the initial stages of the project. It will also help in understanding the role of EA in achieving environmental sustainability and suggesting policies and programs to contribute on an orderly and systematic decision-making process, taking into account the integration of environmental, social, economic and political considerations.

LA 636: Landscape Ecology

Credit hours: 3

Course Description:

This course is designed to introduce the LA students to concepts, methods, and applications of landscape ecology, and how they can be applied to enhance the effectiveness of environmental policy, management, regulation, and assessment. The course helps the student to understand how landscape structure and spatial pattern affect ecological processes as well as interactive relationships between natural and human systems.

LA 637: Project Management in Landscape Architecture

Credit hours: 3

Course Description:

This course is designed to expose students to a wide range of vital areas to project management process and methodologies in landscape architecture profession and give the opportunity to participate in giving solutions to challenges and conflicts that appear to be continuous in this field. Students will receive comprehensive learning in a multitude of subject areas essential to the field including computer applications necessary for landscape construction and maintenance projects, management of natural resources, and business planning.

LA 639: Special Studies in Landscape Architecture

Credit hours: 3

Course Description:

This course aims to teach graduate students subjects and issues not covered by the regular courses and linked to the field of landscape architecture. These special studies will have a positive impact on the development of the graduate student's intellectual, scientific, research and design competencies.

LA 640: Advanced Professional Practice in Landscape Architecture

Credit hours: 3

Course Description:

This course aims to widen students' perceptions of the landscape architectural professional practices, including practice types, ethics, operations and client systems. It is expected that students will be exposed to a range of professional practice procedures undertaken by qualified landscape architects and focus on requirements typical to most forms of practice, large or small, in public and private sectors. It is hoped that students would develop awareness of the important influences that the client, community, economics and other policy planning issues exert over the design and construction process.

LA 641: Advanced Professional Directions in Landscape Architecture

Credit hours: 3

Course Description:

This course aims at exposing the students to the relationships between professional practical aspects and philosophical, design, and technological contemporary products in the field of landscape architecture, through knowledge of driving ideas, design-method innovations and construction techniques. The student will accumulate practical intellectual and visual base of intellectual trends of landscape architecture design and innovations in its special outcome.

LA 694: Approach to Graduation Project

Credit hours: 3

Course Description:

This course aims to teach students the requirements of the graduation project proposal and the method of making it. During the preparation of the project proposal, for example, students will learn how to prepare an introductory background for the idea of the graduation project as well as developing clear and focused aims and objectives. Students will also learn how to define their theoretical position, developing effective working methods and prepare relevant literature review. The course, in addition, presents several contemporary methods on design as research and projective design strategies in landscape architecture to enrich students' thoughts selecting this direction.

LA 698: Research Project

Credit hours: 5

Course Description:

The graduation project addresses the vision of the Landscape Architecture Department, which concerns with issues related to the local community and its natural, urban and human environments. It also concerns with the proper management and preservation of the community resources in order to be available for future generations. The graduation project could be conducted at different planning scales with emphasizing on one of the following

directions of the department: Issues of Urban Heritage or Environmental Sustainability or Landscape Architectural Technology.

AR 610: Advanced Architectural Theory and Criticism

Credit hours: 3

Course Description:

The course reviews historic basis and contemporary development of architectural theory, and the criteria used in architectural criticism, from both Western and non-Western perspectives. The course focuses on issues of regionalism; appropriate interventions between the natural environment and the history of traditions in the built environment, that together maintain and contribute to a sense of place.

AR 620: Urban Design: Principles and Technique

Credit hours: 3

Course Description:

This course looks at the context of urban open space, as planning fact and architectural expression, through the use of comparative examples of Western and non-Western spaces. Typologies of urban spaces are developed based on their disposition, in response to a multiplicity of influences and, their perceptual qualities of spatial definition. Key issues include new town planning, zoning and legal constraints, repagination and change. Technical aspects of open space design are covered, including site construction methodology, infrastructure systems, site feasibility, and urban ecology.

AR 621: Eco-Architecture

Credit hours: 3

Course Description:

This course aims at exposing the students to design philosophies and concepts affecting the profession, and whether in landscape design, site planning or landscape planning, with emphasis on the intellectual basis. Students will acquire knowledge of the philosophies within the field and their origins.

AR 624: Islamic Built Environment

Credit hours: 3

Course Description:

The course deals with the study and analysis of the forces shaping the old Islamic city. concentration is on the study of building models, distinguishing Islamic Architecture in the Arab Region, including mosque, school, khan, bazar (market), residence and hotel. How each model interacts with city Tissue, affected by climate, social habits and arts studied. The course goes beyond review of examples, but tackles specific issues, e.g. the role of decorations in religious buildings, the social system in the whole context. Pattern and style, with pre-Islamic influences, and the interaction between politics and architecture.

AR 626: Theories and Techniques of Conservation

Credit hours: 3

Course Description:

Theory of restoration and preservation of the built environment. Examination of the architectural heritage and the improvement of existing historical buildings. Emphasis is placed on techniques, methods and materials of restoration and preservation. Critical analysis of various conservation theories and methods are examined through regional and international examples of adaptive use of local and regional contexts.

URP 600: Planning-Theory & Process

Credit hours: 3

Course Description:

This course deals with the concepts and logic of planning as a professional activity. Critical overview and evaluation of various planning theories, and their relevance to the Saudi Arabia situation in particular, leading students to the development of a personal philosophy applicable to their work as planners.

URP 613: Management of Urban Development

Credit hours: 3

Course Description:

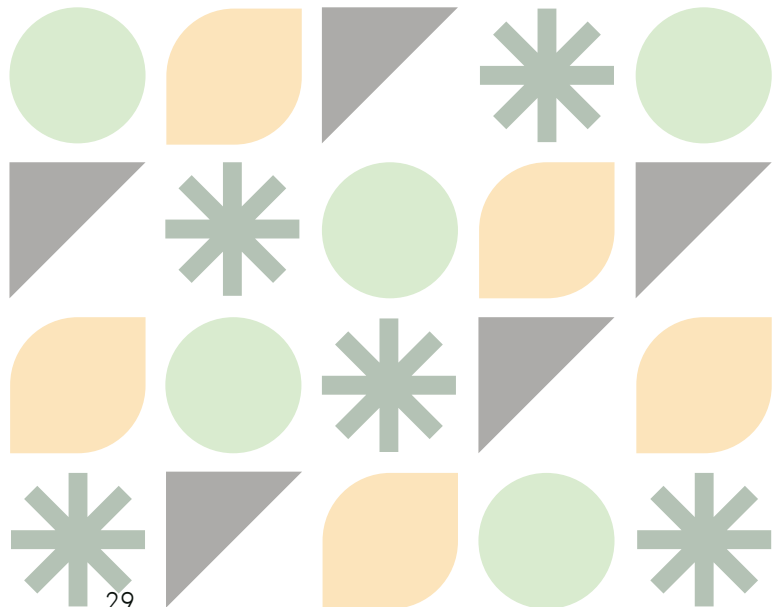
This course deals with the co-ordination of public power and private actions to implement development plans and conserve environmental resources. It also deals with the regulatory, public investment, incentive, and policy instruments used in land-use and environment guiding systems.

URP 623: Regional Development Policy

Credit hours: 3

Course Description:

The course reviews the salient policies of regional development widely used to explain, understand and promote the development process at the local and regional levels. Also deals with perspectives supporting a mediated view of the relationship between regional economic development and planning in developing regions.



4-Research Project

Master of Landscape Architecture

Overview

The MLA program combines coursework and a research project, and students are required to complete a total of 44 credit hours, including 3 credits for LA694: Approach to Graduation Project and 5 credits for LA698: Research Project. These two courses culminate in a landscape architecture design project based on research. The MLA program utilizes a three-level supervision system that is directly and indirectly connected to the research project.

Level 1: Academic Supervision

The Landscape Architecture Department assigns a faculty member as an academic supervisor to one or more graduate students in the MLA program. The role of the academic supervisor in the research project is limited but important. The academic advisor provides a wide range of services to their students, which ultimately can impact the students' academic performance in all courses, including the research project.

Examples of academic advisor duties related to the research project include:

- Providing academic guidance.
- Assisting students with time management.
- Supporting students during examination periods.
- Planning and organizing the supervision process.

Academic Advising: Staff Guide, The Procedural Guide for Academic Advising.

Level 2: Program Coordinator (Monitoring and Supervision)

The Landscape Architecture Department assigns an academic faculty member as a coordinator responsible for the graduate program. The program coordinator serves as the primary point of contact for graduate students at the program level. They have a duty to ensure that departmental and faculty rules are administered in a fair and equitable manner. Additionally, the graduate coordinator monitors the academic progress of graduate students and provides advice regarding any changes to a student's status or program. The graduate coordinator usually serves on the graduate research project committee, which is responsible for reviewing and assessing students' research proposals and final research projects.



Research

Level 3: Research Project Course instructor(s)

The research project course instructor serves as the main supervisor for students' research projects. In LA694: Approach to Graduation Project, students are required to produce a research proposal by the end of the semester, which must be approved by the department committee. Upon successful completion of the research proposal, students are enrolled in LA698: Research Project, where they apply their research work to their final graduation project. The course instructor manages this course as a design studio, where each student works on their project individually under the instructor's supervision. The final outcome of this course is a design project based on research.

Regulation and Procedures for Scientific Supervision of Research Project

The procedure for scientific supervision of the research project in the MLA program consists of two main parts.

Part 1 (Research Proposal):

- 1- Students enroll in LA694: Approach to Graduation Project.
- 2- Students develop a research proposal under the supervision of the course instructor.
- 3- Students present their research proposal to the graduate committee, which includes the course instructor, program coordinator, and a faculty member.
- 4- Students receive their grade (Pass, Pass with Revision, Fail).

Part 2 (Graduation Research Project):

1- The Master's student who pass LA694 is required to register for the Research Project course LA 698 at the beginning of the fourth semester, provided that they have successfully completed 40% of the total coursework.

2- Before starting to write the research project proposal, the student must submit a request to their assigned supervisor for approval of the project title, using Form No. 1 (Approval of the title of a research project for a master's degree) provided for this purpose (Attachment 1). The supervisor must sign the form and submit it to the Head of the Department, who will then assign a faculty member from the department to examine the proposed title and provide their opinion on whether to approve or reject the project title, along with reasons, using the same Form No. 1.

3- After the approval of the research title, the student submits their research project proposal to the Department within a maximum of two pages, where they present the research topic,

its significance, the proposed plan for conducting the research project, and the necessary time frame for its execution, with the research period not exceeding two semesters.

4- Two students may collaborate on a research project, with each student being assigned a specific part of the project. This is done with the aim of encouraging and training students to work as a research team.

5- Each Research Project course can have a registration of 3-5 students, supervised by the course instructor who is a faculty member in their respective specialization. The number of projects generated by the department should not exceed three projects in one semester, and it is permissible to register fewer projects if there is an insufficient number of participating students.

6- The project size should not exceed 100 pages as a maximum limit, and the student should follow the King Abdulaziz University's guidelines for writing scientific papers.

7- Upon completion of the research project, the student submits their project to the Research Project course instructor (supervisor) for evaluation

8- Using Form No. 2 (Report of review and examination of a research project for a degree), the research project is approved for final evaluation by the College's Vice Dean for Graduate Studies and Scientific Research (or Vice Deanship), the Head/Chair of the Department, and the Research Project course instructor (supervisor).

9- Once the project is approved for final evaluation, the Research Project course instructor (supervisor) evaluates the project using Form No. 3 (Research project evaluation form for the master's degree) specifically designed for this purpose. Then, they submit the evaluation form along with the research project to the Head of the Department or Department Chair, who will assign a qualified faculty member from the department to review and evaluate the research project using Form No. 3.

10- The student's grade in the research project is the sum of the grades given by both the Research Project course instructor (project supervisor) and the project evaluator, as indicated in the evaluation form.

Form 1: Approval of the title of a research project for a master's degree

Form 2: Report of review and examination of a research project for a degree

Form 3: Research project evaluation form for the master's degree

KAU Rules for supervising the research project

Committee Name	Committee Responsibilities
1.The Education and Learning Committee	<ul style="list-style-type: none"> - Preparation of academic schedules and distribution of teaching workload among faculty members and relevant staff within the department. - Identification and documentation of issues related to the current curriculum. - Monitoring of academic guidance processes within the department. - Management of academic department resources (labs and others) and development of a plan to enhance department facilities. - Preparation of the academic calendar for the department. - Compilation of the honour list for students in the Landscape Architecture department for each academic year. - Establishment of mechanisms and procedures for complaints and grievances within the department. - Study of the current status of departmental curricula. - Development of a plan to enhance the content of the department's academic courses. - Review of reports from the Curriculum and Ceremonies Committee and the Academic Affairs Committee. - Revision of the curricula for departmental programs. - Review of departmental Studio projects. - Identification of strengths and weaknesses. - Any actions deemed appropriate by the committee within its jurisdiction.
2. The Student Affairs and Alumni Committee	<ul style="list-style-type: none"> - Management of regular meetings with students and their activities. - Supervision of a departmental student magazine. - Conducting student surveys and presenting them to the department council. - Formation of an executive student committee affiliated with the Student Affairs Committee
3. The Community Service Committee	<ul style="list-style-type: none"> - Motivating and providing services to the community. - Introducing the profession and specialization of Environmental Architecture. - Organizing seminars and events related to community service. - Any actions deemed appropriate by the committee to achieve the department's objectives.

4. The Strategic Planning and Quality Control Committee	<ul style="list-style-type: none"> - Preparation of the strategic plan along with all its components and requirements. - Ensuring alignment of the outputs of the strategic plan with the Faculty of Environmental Design and King Abdulaziz University. - Ensuring alignment of the outputs of the strategic plan with the Vision 2030 of the Kingdom of Saudi Arabia. - Ensuring alignment of the outputs of the plan with local and global associations and institutions in the field of Landscape Architecture. - Preparation of publications to introduce the department's strategic plan. - Regular monitoring of the department's strategic plan. - Reviewing and evaluating the current curriculum. - Comparing similar programs locally and globally and identifying best practices in Environmental Architecture programs. - Proposing academic programs (Bachelor's, postgraduate studies, executive programs, community service programs) as deemed appropriate by the committee. - Studying midterm and final exams for departmental courses. - Assessing the suitability of exams administered in courses to achieve learning outcomes. - Establishing a bank of course exams.-
5. The Faculty and Staff Affairs Committee	<ul style="list-style-type: none"> - Studying the department's needs for faculty, administrative, and technical staff. - Monitoring performance evaluation processes. - Developing methods and proposals for performance evaluation processes. - Preparing an informative handbook for faculty members in the department outlining procedures for applying for academic promotion, book publication, excellence awards, etc. - Monitoring and guiding teaching assistants and lecturers in the department during the process of applying for scholarships. - Developing a plan to monitor and communicate with departmental scholars abroad.
6. The Committee for Reviewing Committee Activities	<ul style="list-style-type: none"> - Ensuring that departmental committees are carrying out their tasks effectively. - Providing support to departmental committees. - Developing a timeline for committee activities to be submitted to the department chair and the higher committee. - Verifying the minutes and reports of committee activities for the previous academic year.
7. The Academic Accreditation Review Committee	<ul style="list-style-type: none"> - Reviewing the academic accreditation files specific to the program. - Ensuring that all requirements for academic accreditation are met. - Reviewing reports and course descriptions to ensure their compliance with NCAAA standards

6-Services & Common Facilities

Computer Laboratory:

The Faculty and the Landscape Department have a professional computer lab equipped with the latest computer systems and design software related to the fields of Architecture and Landscape Architecture.

Digital Fabrication Laboratory:

The digital fabrication lab at the School of Architecture and Planning offers students a wide range of digital fabrication tools, such as laser cutting machines, 3D printers, and CNC milling machines.

Environmental Laboratory:

The department has a professional environmental lab used for soil, water, and vegetation studies and analysis..

Wood Workshop:

The wood workshop at the School of Architecture and Planning includes a wide range of essential woodworking tools that allow students to construct physical models to represent their design work.

Library:

The library at the School of Architecture and Planning provides a wide range of essential references for researchers.

Design Studios:

The design studios at the School of Architecture and Planning offer a rich learning environment that enhances students' abilities in the landscape architectural design process and enables them to express their design ideas and creativity.



7-Staff and Faculty Members

No.	Member Name	Academic Title	Status
1	Dr. Farouk Fouad Daghistani	Professor	Full time member
2	Dr. Abdullah Nidal Addas	Professor	Under Secondment
	Dr. Mamdouh Mohammad Sobaihi	Associate Professor	Full time member
3	Dr. Abdullah M.Farid Ghazal	Associate Professor	Full time member
4	Dr. Nawaf Rashed Alhajaj	Associate Professor	Full time member
5	Dr. Abdulkader Abdulrahman Algilani	Assistant Professor	Full time member
6	Dr. Abdullah Mohammed Alshanbri	Assistant Professor	Full time member
7	Dr. Maher Mahfouz Samman	Assistant Professor	Department Head
8	Dr. Amer Mohammed Habibullah	Assistant Professor	Full time member
9	Dr. Abdulrahman Ayman Zawawi	Assistant Professor	Full time member
10	Dr. Fahd Matar Al-Ghamdi	Assistant Professor	Full time member
11	Dr. Mohammed Ali Alshahrani	Assistant Professor	Part time Affiliation
12	Dr. Ali Yeslam Ba-Ubaid	Assistant Professor	Part time Affiliation
13	LA. Raed Abdulrazak Dawood	Lecturer	Full time member
14	LA. Mohammed Abdullah Bamousa	Lecturer	Full time member
15	LA. Mohammed Abbas Alharthi	Lecturer	On Academic leave
16	LA. Abdulqader Mahmoud Sait	Teaching Assistant	Full time member
17	LA. Saeed Al-Hasiki	Teaching Assistant	On Academic leave
18	LA. Ahmed Hawaldar	Teaching Assistant	On Academic leave
29	Anas Hamad Alghoribi	Dept. Secretary	Staff member
20	Emad Hasan Aldahmani	lab Technician	Staff member

MLA Program Coordinator:

No.	Coordinator Name	Contact	Years
1	Dr. Amer Habibullah	Email: amhabiballah@kau.edu.sa	2023- Current
2	Dr. Mamdouh Sobaihi	Email: msubehi@kau.edu.sa	2020-2022

8- KAU Graduate Studies Manual

An official guide to the graduate studies at King Abdulaziz University, for the academic year 2021-22 (1443 Hijri) whose wording was based on the unified regulation for graduate studies in universities and their executive rules at KAU, the Council of Higher Education and its implementing regulations, regulations, and decisions in force in the Kingdom at the time.

of admission to any of the graduate programs.

- Everything in this guide applies to graduate students accepted after the issuance of this guide - from admission to graduation – The university reserves the right to make any amendments (regarding admission, courses requirements programs or other issues) without prior notice.
- Every graduate student should be fully aware of the rules and regulations contained in this guide, and they must abide by them.

KAU Graduate Studies Manual

9- University Student Regulations, Rights and Responsibilities

The KAU student regulations have been drafted to ensure students' rights, to raise their awareness of their responsibilities to adhere to Islamic and University best codes of conduct, and to develop their sense of belonging to their community and nation. The regulations are divided into two basic sections in relation to the academic and non-academic rights and responsibilities of university students.

KAU student regulations, rights and responsibilities

10- Complaints and Grievances

The KAU student regulations have been drafted to ensure students' rights, to raise their awareness of their responsibilities to adhere to Islamic and University best codes of conduct, and to develop their sense of belonging to their community and nation. The regulations are divided into two basic sections in relation to the academic and non-academic rights and responsibilities of university students.

KAU student regulations, rights and responsibilities

