

# External assignment allowance



# External assignment allowance

## Application steps

**Applicant  
(Instructor)**

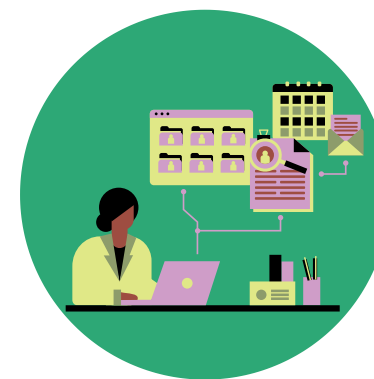
**Fill in the data by the  
applicant**



**Director of the Joint  
Supervision  
Program**



**Statement of termination  
of assignment**



**Assignments**



**Log in to your  
account ANJEZ**



**Salary Administration  
for the Joint  
Supervision Program**



**financial department**

**Issuing a follow-up  
statement and  
entering data into the  
Etemad platform**

