

blood

Prepublished online Nov 13, 2008;
doi:10.1182/blood-2008-06-165845

D-dimer antigen: Current concepts and future prospects

Soheir S. Adam, Nigel S. Key and Charles S. Greenberg

Information about reproducing this article in parts or in its entirety may be found online at:
http://bloodjournal.hematologylibrary.org/misc/rights.dtl#repub_requests

Information about ordering reprints may be found online at:
<http://bloodjournal.hematologylibrary.org/misc/rights.dtl#reprints>

Information about subscriptions and ASH membership may be found online at:
<http://bloodjournal.hematologylibrary.org/subscriptions/index.dtl>



ADAM et al.

D-DIMER IN CLINICAL PRACTICE

Review Article

D-dimer Antigen: Current Concepts and Future Prospects

Soheir S. Adam,¹ Nigel S. Key,¹ and Charles S. Greenberg²

¹ *University of North Carolina, Chapel Hill, NC, USA;* ² *Duke University Medical*

Center, Durham, NC, USA

Correspondence: Soheir S. Adam, The University of North Carolina at Chapel Hill,
Division of Hematology/Oncology, 170 Manning Drive, CB#7305, Chapel Hill, 27599-
7305, USA; email: soheir_adam@med.unc.edu

Abstract

The D-dimer antigen is a unique marker of fibrin degradation that is formed by the sequential action of three enzymes: thrombin, factor XIIIa and plasmin. First, thrombin cleaves fibrinogen producing fibrin monomers which polymerize and serve as a template for factor XIIIa and plasmin formation. Second, thrombin activates plasma factor XIII bound to fibrin polymers to produce the active transglutaminase, factor XIIIa. Factor XIIIa catalyzes the formation of covalent bonds between D-domains in the polymerized fibrin. Finally, plasmin degrades the crosslinked fibrin to release fibrin degradation products and expose the D-dimer antigen. D-dimer antigen can exist on fibrin degradation products derived from soluble fibrin before its incorporation into a fibrin gel, or after the fibrin clot has been degraded by plasmin. The clinical utility of D-dimer measurement has been established in some scenarios, most notably for the exclusion of VTE. This paper consists of two sections: in the first, the dynamics of D-dimer antigen formation is discussed and an overview of commercially available D-dimer assays is provided. The second section reviews available evidence for the clinical utilization of D-dimer antigen measurement in VTE, as well as emerging areas of D-dimer utilization as a marker of coagulation activation in other clinical settings.

Biochemical steps in “D-dimer” antigen formation

Fibrinogen is a soluble plasma glycoprotein that is transformed into highly self-adhesive fibrin monomers after thrombin cleavage.¹ A detailed overview of the process of fibrin formation was recently published.² Briefly, in the first step of D-dimer formation thrombin cleavage exposes a previously cryptic polymerization site on fibrinogen which promotes the binding of either another fibrinogen or a monomeric fibrin molecule.³ Fibrin monomers then bind to one another in an overlapping manner to form two molecule thick protofibrils (Figure 1).^{4,5}

Plasma remains fluid until 25-30% of plasma fibrinogen is cleaved by thrombin⁶, allowing time for fibrin to polymerize while simultaneously promoting thrombin activation of plasma factor XIII.⁷ Thrombin remains associated with fibrin⁸, and as additional fibrin molecules polymerize, it activates plasma factor XIII bound to fibrinogen.⁹ The complex between soluble fibrin polymers, thrombin and plasma factor XIII promotes the formation of factor XIIIa before a fibrin gel is detected.⁶

In the second step of D-dimer formation, factor XIIIa covalently cross links fibrin monomers via intermolecular isopeptide bonds formed between lysine and glutamine residues within the soluble protofibrils and the insoluble fibrin gel.¹⁰

D-dimer antigen remains immeasurable until it is released from crosslinked fibrin by the action of plasmin. In the final step of D-dimer formation, plasmin formed on the fibrin surface by plasminogen activation cleaves substrate fibrin at specific sites (Figure 1).¹¹ Fibrin degradation products are produced in a wide variety of molecular weights, including the terminal degradation products of crosslinked fibrin containing D-dimer

and fragment E complex (Figure 1).^{12,13} It is uncommon to detect circulating terminal fibrin degradation products (D-dimer-E complex) in human plasma, whereas soluble high molecular weight fragments that contain the ‘D-dimer antigen’ are present in patients with DIC and other thrombotic disorders.¹⁴ These fragments may be derived from soluble fibrin before it has been incorporated into a fibrin gel, or alternatively may be derived from high molecular weight complexes released from an insoluble clot (Figure 2).^{15,16}

‘D-dimer antigen’ detection requires specific monoclonal antibodies

Modern commercial D-dimer assays measure an epitope on degradation products of factor XIIIa-crosslinked fibrin by one of several methods. All assays utilize monoclonal antibodies that detect an epitope which is present in the factor XIIIa-crosslinked fragment D domain of fibrin (Figure 1), but not in fibrinogen degradation products or non-crosslinked fibrin degradation products. Notably, each detecting monoclonal antibody has its own unique specificity.¹⁷ Several monoclonal antibodies have been epitope mapped and the antigenic determinant recognized is a portion of the polypeptides in the D-domain that are conformationally reactive after factor XIIIa and plasmin have modified the protein.¹⁸

D-dimer antigen versus the terminal digest of fibrin

Initially the term ‘fragment D-dimer’ was used to describe a terminal plasmin digestion product of a factor XIIIa-crosslinked fibrin clot.¹⁹ The terminal digest of a crosslinked fibrin clot contains the fragment D-dimer -fragment E complex (Figure 1).²⁰

However, the actual “D-dimer antigen” detected by contemporary clinical assays is not

necessarily the terminal digestion product of fibrin (i.e the fragment D-dimer-E complex), and for some clinical disorders has been shown to be high molecular weight soluble fibrin fragments that have either not entered a fibrin gel or are released before complete plasmin degradation has occurred (Figure 2).¹⁷ Detailed studies conducted by Francis et al have shown that the fragment D-dimer - E complexes are formed after high molecular weight crosslinked fibrin complexes are released from an insoluble fibrin clot.²¹

D-dimer laboratory assays

The impetus to develop a D-dimer assay came from the fact that clinical laboratory tests for fibrin degradation were incapable of distinguishing between fibrinogen and fibrin degradation products.²² Numerous clinical studies were initiated once commercially available assays for fibrin related D-dimer antigen were developed²³

Despite their ability to measure a fibrin specific product of thrombin, factor XIIIa and plasmin action they have limitations related to both their specificity and sensitivity. Currently available D-dimer assays are not identical because the D-dimer antigen is present on different size degradation products, the monoclonal antibodies recognize different epitopes, and the assay format, assay calibration standards and instrumentation vary. Recently, a comprehensive comparison of clinical laboratory performance characteristics of different assays was presented.²⁴ These results emphasize the need for physicians to recognize that D-dimer assays have unique performance characteristics. Clinicians need to be aware of the performance characteristics of the particular D-dimer test in use at their institution, as the D-dimer analyte is not a simple structure with a

uniform composition. The cut-off value used to exclude VTE needs to be confirmed by the clinical laboratory. Alternatively, the institution should utilize an assay that has been previously validated in clinical studies. This topic has been discussed extensively by Dempfle and is the subject of an International Society of Thrombosis and Haemostasis Scientific Standardization sub-Committee study.¹⁷ Efforts to standardize assay results have not been successful so far, since the D-dimer analyte is not uniform across the different assays. Accordingly, there were attempts to harmonize assay performance through the interconversion of results from different assays using specific mathematical formulas²⁵, but this is yet to be accepted as universal practice.

The first generation of D-dimer assays were performed on plasma using latex beads coated with the DD-3B6 antibody.²³ In this assay the D-dimer epitope was characterized and was found to be a unique portion of the D-domain that underwent a conformational change upon covalent ligation by factor XIIIa, thereby becoming reactive with the monoclonal antibody after plasmin degradation.²⁶ Latex agglutination assays rely upon the presence of sufficient bivalent D-dimer antigen on fibrin degradation products to initiate agglutination. Early assays required laboratory personnel to visually read and report the magnitude of the agglutination response.²⁷ The assay could be performed in plasma and would only detect D-dimer antigen after fibrin had been subjected to factor XIIIa-mediated cross linking, and plasmin had degraded the cross linked protein.²³ Subsequently other monoclonal antibodies and automated assay detection methods were developed.^{28,29}

Automated latex agglutination assays that recorded the rate at which antibody-coated particles aggregated in response to the D-dimer antigen were developed for use on specialized analyzers.³⁰ The specificities of these antibodies are not identical and they may react differently with high and low molecular weight fibrin degradation products.. Studies conducted with standards produced from partially digested and fully digested fibrin clots have shown that each assay may have a distinct sensitivity to various size degradation products. The calibrator for the assays should thus contain various D-dimer containing fibrin compounds, simulating the analyzed samples.³¹

Enzyme-linked immunosorbent assay (ELISA) methods were initially developed for research purposes before the latex agglutination assays and they relied upon antibody capture of the D-dimer antigen on the plate, followed by tagging of the antigen with an antibody detection system for fibrin-related antigen. While this assay format was extremely sensitive, it required more time to perform, and until recently, was not easily automated for clinical use.

Several technological advances in assay format and instrumentation led to ELISA-based assays that have increased sensitivity and are capable of detecting elevated D-dimer antigen associated with a variety of clinical disorders.^{32,33}

Assays using fluorescence endpoint detection methodology had equivalent sensitivity and specificity, with the added advantage of speed and a wide linear range that could detect D-dimer levels between 0–1000 $\mu\text{g/mL}$.³⁴ Tests using immunofiltration were subsequently developed which further shortened laboratory turn-around times, while maintaining excellent sensitivity,

specificity, and negative and positive predictive values compared to the ‘gold standard’ ELISA.³⁵ Immunofiltration tests yield results within 2 minutes allowing for prompt reporting and clinical management.³⁶ Automated techniques that quantitate latex agglutination rates also have excellent sensitivity, and have been demonstrated to maintain good correlation with ELISA.³⁷ ELISA and latex turbidimetric methodologies have both been approved by the FDA for the exclusion of venous thromboembolism, and are used worldwide for this purpose.

Whole blood agglutination tests that do not require sophisticated instrumentation were also subsequently developed,³⁸ allowing for prompt clinical decision-making with limited need for advanced laboratory equipment.³⁹ While these assays are less sensitive and cannot detect low levels of D-dimer antigen, they show sufficient specificity to allow exclusion of the diagnosis of venous thromboembolism (VTE) in the correct clinical setting. Comparing the performance of various D-dimer assays leads to better understanding of their potential role in diagnosis of venous thromboembolism (VTE) (Table 1). The ELISA and fluorescence assay (ELFA), the microplate ELISA and the automated quantitative turbidimetric assays have a higher sensitivity than the whole blood agglutination assay (95% compared with 85% respectively), but a lower specificity (50% vs. 70% respectively). This trade-off increases the need for further imaging to establish a diagnosis of VTE in the

case of the ELISA based assays. The whole blood agglutination assays have a higher negative predictive value in populations with a low prevalence of VTE.⁴⁰ These compromises make it imperative that clinicians understand the nature of the assay and the performance characteristics of the particular D-dimer test used by their hospital laboratory. Collaborative efforts between clinicians and laboratory personnel should be directed towards offering tests that can aid clinicians to effectively exclude VTE in their patient population. Clinicians should request D-dimer assays in the appropriate clinical context, and laboratories should utilize assays that have been tested and validated in clinical studies. Furthermore, since the cut-off value plays a critical role in determining clinical decisions, it is imperative that the laboratory provides established and reliable cut-off values to help interpret the results accurately. Corresponding cut-off values for unique patient populations, based on clinical evidence, should be available to apply the results in a relevant manner.

The clinical utility of D-dimer measurement

There are several clinical scenarios that may prompt a practitioner to measure or monitor D-dimer levels. In general, the D-dimer test may be ordered to ascertain to what extent fibrin formation has been initiated, or to learn whether there is any change in this process in the course of a specific therapy or disease process.^{41,42} In practice, D-dimer measurement has been most comprehensively validated in 1] the exclusion of VTE in certain patient populations; and 2] the diagnosis and monitoring of coagulation activation in DIC. More recently, D-dimer assays have also begun to find clinical utility

in the prediction of recurrent VTE and risk- stratification of patients for VTE recurrence. We will briefly review the data supporting the utility of D-dimer assays in each of these clinical settings.

Clinical Prediction Rules and D-dimer Measurement in the Exclusion of VTE

D-dimer assays may be utilized in the initial evaluation of patients suspected of having VTE (deep vein thrombosis (DVT) and/or pulmonary embolism (PE) since the exclusion of VTE cannot be made on clinical grounds alone.⁴³ The fact that only a small portion of circulating fibrinogen needs to be converted to cross linked fibrin to generate a detectable D-dimer antigen signal after plasmin digestion in plasma⁴⁴ confers the sensitivity required. Thus, a normal D-dimer in the appropriate clinical context denotes that there is no major ongoing activation of intravascular coagulation, and serves as a reliable tool for the exclusion of VTE. In a large meta-analysis, Stein et al demonstrated that a negative D-dimer test by the rapid ELISA method is as diagnostically useful as a negative computerized tomography (CT) or a negative compression ultrasonography study (CUS) in excluding PE and DVT respectively.⁴⁵ However, recent surveys indicate that D-dimer assays are often not utilized appropriately for the exclusion of VTE in clinical practice.⁴⁶

Upon presentation, all patients should be carefully evaluated for clinical pre-test probability of VTE using a validated clinical prediction rule (CPR), and then stratified into probability groups. Several CPRs are available for the assessment of the clinical pre-test probability for VTE including the Emperic, Wells, modified Wells, Charlotte, Geneva and modified Geneva. A recently validated simplified CPR dichotomizes

patients into two groups according to the likelihood of VTE (Figures 3-4).^{47, 48} In order for a CPR to reliably determine pre-test probability, it must be reproducible. In prospective assessments of these CPRs in the diagnosis of PE, the inter-rater agreement on the Wells score ranged from moderate to excellent (0.47 to 0.86), while for the revised Wells score it was 0.72. Two assessments of the Charlotte rule showed excellent agreement (0.83 and 0.85). There are no published prospective studies addressing inter-rater agreement of the Geneva score to date.⁴⁹

D-dimer and Deep Vein Thrombosis (DVT)

Most patients referred for evaluation of suspected DVT are outpatients, where the prevalence of DVT is relatively low. In this setting, D-dimer measurements combined with CPR and CUS have a high negative predictive value in the diagnosis of DVT, and are used to limit the use of more expensive and invasive studies.⁴³

The incidence of DVT in hospitalized patients has reportedly increased from 0.8% to 1.3% of admissions over a period of 20 years⁵⁰, making this a growing healthcare problem. However, the diagnosis of thrombosis in this setting is complicated by the fact that D-dimer antigen levels are commonly elevated for various reasons in hospitalized patients, which limits its value for exclusion of VTE. In one representative study only 22% of hospitalized patients without DVT had plasma D-dimer levels below the normal cut-off value that was used to exclude venous thrombosis in outpatients.⁵¹ The higher baseline values of D-dimer in hospitalized patients may reflect any one of a number of underlying disease processes that initiate intravascular fibrin formation, but do not necessarily result in overt thrombosis.⁵² Since fibrin may be cross linked before

it gels, D-dimer antigen may be generated in the absence of overt thrombosis.⁵³

Activation of blood coagulation is often promoted by inflammatory responses, resulting in elevated plasma D-dimer antigen levels.⁵⁴ Furthermore, during the aging process inflammation and activation of blood coagulation may also be enhanced, and account for elevated baseline D-dimer levels seen in the elderly.⁵⁵ This effect alters the reference range in the elderly population, and negates the clinical value of the standard D-dimer antigen cut-off threshold as an exclusionary test in this age group.⁵⁶

Thus, in the appropriate setting D-dimer testing can be a valuable screening and diagnostic tool for the clinician. The pre-test probability of DVT is a major determinant of the potential value of D-dimer measurement. A working algorithm for the diagnosis of DVT should guide the clinician to a prompt and confident diagnosis (Figure 3). This topic has been widely investigated, and excellent reviews have recently been published.^{40,45} However, the lack of standardization of the measurement, the most appropriate cut-off values, and the units used to report D-dimer antigen levels have led to some confusion regarding the utility of D-dimer in clinical practice. In addition, many manufacturers of the D-dimer assay recommend that the optimal cut-off values for excluding deep vein thrombosis should be determined for each population of patients tested.⁵⁷ Generally, when performed by a qualified laboratory on non-anticoagulated outpatients suspected of having DVT, the assay can be effectively incorporated into evidence-based clinical algorithms to exclude DVT.⁴³ Conversely, the use of D-dimer assays for exclusion of recurrent DVT in patients already on anticoagulation may be of limited value.⁵⁸

D-dimer and Pulmonary Embolism (PE)

Clinical trials have demonstrated that D-dimer measurements used in isolation are insufficient to make diagnostic decisions in VTE. However, in PE as with DVT, D-dimer testing when used as part of a diagnostic algorithm which incorporates the determination of pre-test probability may obviate the need for more costly evaluation (Figure 4).³³ According to a recent report using Bayesian analysis, the diagnosis of PE relies on the clinical pre-test probability as well as on the sensitivity and specificity of the diagnostic tests used.⁵⁹ In a study of 3306 patients, the combination of a low clinical probability and a negative D-dimer test effectively excluded PE, with a 3 month follow up incidence of VTE of only 0.5%.⁶⁰ Other studies have subsequently confirmed this finding.^{33,61} In patients with a high clinical probability of PE, a prospective study recently found that D-dimer had a higher negative predictive value (NPV) than the Wells CPR, and that the combination of both further improved the diagnostic algorithm.⁶² Analysis of the data from the Christopher study showed that the false negative rate of PE diagnosis by CT in patients with high probability of PE was 5.3%.⁶³ Similarly, in the PIOPED II study, 6 out of 15 patients with a high clinical probability of PE and a negative CT had PE.⁶⁴ Therefore, further testing in this setting seems justified.

The plasma levels of D-dimer were found to be directly related to the severity of PE, and could predict adverse outcomes assessed by radiological, biochemical and clinical criteria.⁶⁵ Furthermore, markedly elevated D-dimer levels were recently found to increase the likelihood of PE diagnosis.⁶⁶ Thus, high D-dimer levels upon presentation

may potentially prompt a more intense diagnostic approach, irrespective of pre-test probability.

Effect of anticoagulation on D-dimer levels in acute VTE

Elevated plasma levels of D-dimer antigen gradually normalize in patients receiving anticoagulant therapy for acute VTE. In an attempt to study these changes, patients were randomized to receive either dose adjusted unfractionated heparin (UFH), or low molecular weight heparin (LMWH).⁶⁷ In this instance, no significant difference in the rate of normalization of markers of coagulation activation (including D-dimer) was noted. This observation suggests that the use of agents with predominantly anti-Xa activity (LMWH) or agents with combined anti-Xa and antithrombin activity (UFH), results in equivalent changes in fibrin formation and degradation following acute thrombosis. Theoretically, plasma “D-dimer antigen” levels could thus be used to monitor the response to therapy utilizing either agent. However, on the basis of the current evidence, there is generally no compelling reason to follow D-dimer antigen levels during the initial phase of anticoagulation.

D-dimer and Recurrent VTE

It has been previously shown that a negative D-dimer test can exclude recurrent DVT and that heparin therapy can also be safely withheld in patients with negative serial compression ultrasonography, even if their D-dimer is positive. This approach can be safely and effectively used to manage approximately 70% of patients with suspected

recurrent DVT.⁶⁸ Furthermore, D-dimer levels were recently proposed to be useful in establishing the risk of recurrent thrombosis, thereby assisting in determining the proposed duration of anticoagulation for VTE patients.⁶⁹ In this study 608 patients with a first unprovoked VTE, who had received at least three months of oral anticoagulation, were followed up prospectively. D-dimer levels were obtained one month after cessation of anticoagulation. Patients with normal D-dimer did not resume anticoagulation. Patients with an abnormal D-dimer were randomized to resume or not to resume anticoagulation. During follow-up of this group, the incidence of recurrent VTE was 15% and 2.9% in patients who discontinued and those who resumed anticoagulation, respectively. Among patients who stopped anticoagulation, the adjusted hazard ratio for VTE recurrence among those with an abnormal D-dimer level was 2.27(95% CI, 1.15 to 4.46; P=0.02). Data from this trial were recently analyzed by different quantitative ELISA D-dimer assays to determine the risk for VTE recurrence.⁵⁷ Different cut-off values were assigned according to patient characteristics and the nature of the assay.

D-dimer testing for exclusion of DVT in cancer patients

The validity of available DVT diagnostic algorithms in cancer patients is compromised by several factors. First, D-dimer levels may be elevated in cancer patients in the absence of thrombosis. Second, none of the diagnostic algorithms devised for diagnosis of DVT have been validated in cancer patients. Moreover, the NPV of D-dimer testing in this population is lower than in non-cancer patients as a consequence of the higher prevalence of DVT in cancer patients.⁷⁰ A large study reported that 7.8% of cancer

patients with a negative D-dimer test had acute DVT, compared to 3.5% in non-cancer patients.⁷¹ The prevalence of DVT in cancer patients was twice that in non-cancer patients. This study also found that 88%-94% of cancer patients required further investigations beyond D-dimer testing, potentially negating the value of D-dimer testing as a screening tool for DVT in this population. In the case of PE diagnosis, data analysis from 1,721 patients showed that an ELISA D-dimer assay could be used to exclude PE in cancer patients, although it was recommended that a higher cut-off value be utilized.⁷² A recent prospective study of oncology patients found D-dimer levels to have a high negative predictive value and a high sensitivity in the diagnosis of PE.⁷³

D-dimer for excluding VTE in Pregnancy

In normal pregnancy, D-dimer levels steadily increase until the time of delivery⁷⁴, and there are no specific cut-off values for diagnosis of VTE in pregnancy. Furthermore, the CPRs currently in use have not been validated in pregnancy. A prospective study found D-dimer measurements helpful in excluding DVT in the first two trimesters of pregnancy, while its value in diagnosis of PE was limited.⁷⁵ It is, however recommended to perform a D-dimer test and a proper clinical assessment for suspected VTE in pregnancy.⁷⁶ If the D-dimer is positive then radiological assessment should be performed.

D-dimer antigen and the DIC Syndrome

Disseminated intravascular coagulation (DIC) is a serious complication of sepsis, malignancy, obstetric mishaps, and other inflammatory disorders in which there is a persistent stimulus for the activation of blood coagulation. DIC is characterized by

persistent intravascular thrombin generation and fibrin formation in the microvasculature, ultimately leading to depletion of coagulation factors and their inhibitors to produce a bleeding and/or thrombotic disorder.⁷⁷ Early diagnosis of DIC is pivotal to initiation of appropriate management, (which generally includes an aggressive attempt to remove the underlying cause) and achieving better outcomes. The lack of standard diagnostic criteria made it difficult to study treatment options and design clinical studies. In 1987, a Japanese scoring system for DIC was introduced,⁷⁸ and a few years later the ISTH introduced two separate scoring systems for overt and non-overt DIC.⁷⁷ Recently, a prospective comparison of the ISTH and the Japanese scoring systems reported equal effectiveness in identifying DIC.⁷⁹

The ISTH scoring system for overt DIC has been shown to be a valid predictor of outcome and fatality associated with DIC.⁸⁰ The laboratory parameters for assessment of the overt DIC score are the platelet count, prothrombin time and a fibrin- related marker (FRM), as well as fibrinogen concentration. D-dimers or fibrin degradation products (FDPs) are the most common fibrin-related markers used by clinical laboratories in this context.

Dempfle et al reported that the choice of FRM can impact the performance of the overt DIC score.⁸¹ These investigators concluded that using soluble fibrin marker as an FRM was more prognostically relevant than D-dimers in a cohort of ICU patients. While additional studies are needed to confirm this finding, the observation is biologically plausible; since D-dimer assays detect relatively small proteolytic fragments of fibrin clots, a positive result can reflect both extravascular and intravascular fibrin generation.

On the other hand, soluble fibrin is a more specific measure of intravascular fibrin formation.⁸²

The Emerging Role of D-dimer Measurements in other Clinical Settings

In addition to the established uses described above, D-dimer measurements have increasingly been studied as markers of coagulation activation in a number of other clinical scenarios.

As evidence evolves that some of these clinical settings are prothrombotic, there is an increasing need to explore the possible role of D-dimer in the assessment of VTE risk in these settings.

Some of these disorders will be briefly reviewed here.

D-dimer for the diagnosis of Acute Aortic Dissection

Recently, Sodek et al. concluded from a study of 65 patients that D-dimer can exclude acute aortic dissection (AAD) with a 100% sensitivity. However, since AAD is a life-threatening condition, D-dimer measurement should not preclude the use of diagnostic imaging.⁸³ Clinical risk assessment in combination with D-dimer may prove useful and requires further study.

D-dimer antigen and Hematopoietic Growth Factors

The increased use of hematopoietic growth factors to treat cytopenias and mobilize stem cells has led to the recognition of thrombosis as a complication of these agents.⁸⁴

It remains unclear whether the growth factor alone or the treatment regimen in combination with the underlying disease process lead to thrombosis. The need to monitor patients for thrombotic risk and to identify those who may benefit from pharmacological thromboprophylaxis has led to the assessment of D-dimer levels in patients on growth factors.

Recombinant Erythropoietin: The recognition of a number of adverse effects of erythropoietin therapy including thrombosis, hyperviscosity, hypertension, and possibly promotion of cancer progression has led to more stringent guidelines on the use of this growth factor in the treatment of anemia in patients on hemodialysis, with cancer/chemotherapy-related anemia, and in other disorders.^{85,86} A markedly elevated hematocrit has been shown to activate coagulation, but the elevation of the hematocrit to levels within the normal range in patients with a history of anemia, has not been uniformly demonstrated to activate blood coagulation.⁸⁷

Several studies have examined coagulation activation markers during recombinant erythropoietin (rhEpo) therapy. In patients on hemodialysis, D-dimer levels initially increased upon achievement of target hemoglobin levels, with a decline 3 months after stabilization.⁸⁸ Multiple factors may lead to thrombosis in hemodialysis patients, and interpretation of D-dimer measurements requires an assessment of all the underlying clinical covariables.

G-CSF: Canales and colleagues examined the effect of granulocyte colony-stimulating factor (G-CSF) on the coagulation system in 25 healthy peripheral blood stem cell donors. They reported significant increases in D-dimer and in thrombin-antithrombin complex (TAT) levels associated with decreases of antithrombin and protein C levels in plasma.⁸⁹ The authors concluded that the use of G-CSF results in a prothrombotic state in healthy volunteer donors of peripheral blood stem cells and should be used with caution in patients with a known hypercoagulable state. These findings were later reproduced by other investigators.⁹⁰

GM-CSF : Granulocyte macrophage colony stimulating factor (GM-CSF)

administration, whether alone or in combination with other agents such as G-CSF has also been reported to be associated with thrombosis^{91, 92}.

Clinicians should thus be aware of the possibility that growth factors may enhance the risk of thrombosis particularly in patients with prior thrombosis, a strong family history of thrombosis, or in the presence of other known risk factors. D-dimer measurements may prove to be valuable for the prediction of thrombosis and should certainly be considered to rule out thrombosis should relevant symptoms develop.

Hemolysis, thrombosis and D-dimer measurement:

Hemolysis is a well- recognized risk factor for the development of thrombosis in several hematologic disorders.⁹³

Sickle Cell Disease: Sickle cell disease has been described as a hypercoagulable state, and while it is uncertain whether activation of coagulation is a cause or effect of many vaso-occlusive complications in sickle cell disease, there is growing evidence that the sickle hemoglobinopathies are associated with an increased risk of clinically overt thrombosis.⁹⁴The mechanism of hypercoagulability is probably multi-factorial and involves abnormalities in platelet function, thrombin generation and regulation, and fibrinolysis.⁹⁵Furthermore, we have recently demonstrated that even individuals with sickle trait may be at increased risk for deep vein thrombosis.⁹⁶

Early studies reported changes in the formation of factor XIIIa-crosslinked fibrin (ogen) during pain crises in sickle cell disease.⁹⁷Subsequently D-dimer levels were discovered to be increased at baseline and during pain crisis in sickle cell disease.⁹⁸This

hypercoagulable state has been associated with increases in plasma levels of markers of endothelial activation, such as soluble E-selectin and von Willebrand factor, as well as markers of inflammation such as interleukin 6 (IL-6) which promotes tissue factor and thrombin generation.⁹⁹

Thalassemia: Thrombosis is a well-described complication in thalassemia, particularly in the 'Thalassemia Intermedia' clinical phenotype.¹⁰⁰ Direct and indirect markers of thrombin generation such as Prothrombin F1+2 and D-dimers were found to be increased, particularly following splenectomy.¹⁰¹ Other studies have reported elevated D-dimers in splenectomized hemoglobin E thalassemia and in double heterozygotes for hemoglobin E/ β thalassemia.¹⁰² Clinical trials focusing on prevention and treatment of thrombosis in these disorders are limited thus far, and efforts to develop risk-stratification models are needed.

Cancer Therapy and D-dimer Measurement:

Chemotherapy: A study examining the association of thrombosis with thalidomide treatment in multiple myeloma reported a relationship between high D-dimer levels at presentation, and the subsequent development of VTE. It has been suggested that these individuals may benefit from prolonged prophylactic anticoagulation.¹⁰³ However, additional studies are needed to validate whether an elevated D-dimer could be used to guide the type and duration of prophylactic anticoagulation in this situation.

Immunotherapy: Various cytotoxic chemotherapeutic agents and immunotherapies have been reported to increase the risk of thrombosis in cancer.¹⁰⁴ A report described a cytokine-release syndrome associated with elevated D-dimers, LDH and liver

transaminases in a population of B-cell chronic lymphocytic leukemia (CLL) patients receiving monoclonal anti-CD20 (Rituximab™).¹⁰⁵ Weitz demonstrated that repeated cycles of systemic chemotherapy administered to patients with breast and lung cancer led to elevation in circulating levels of TAT and D-dimer, and that a single dose of LMWH administered before chemotherapy prevented this phenomenon.¹⁰⁶ It is possible that D-dimer could be used as an adjunctive biomarker to predict the risk of chemotherapy-induced thrombosis, although additional studies are required before this approach can be endorsed.

Stem Cell Transplantation: In stem cell transplantation, D-dimer levels were significantly elevated in patients with post-transplant complications.¹⁰⁷ The risk of thrombosis in the post-transplant setting may vary depending upon the conditioning regimen, nature of the transplant, underlying disease, and post transplant therapy. Whether or not these clinical predictors of VTE are negated by the presence of normal plasma D-dimer levels at a given time point remains to be determined.

Conclusion

The D-dimer antigen is generated as a result of fibrin formation and fibrinolysis. The enzymes that function to generate this antigen are thrombin, factor XIIIa and plasmin. Fibrin molecules that contain the D-dimer antigen are formed both in intravascular and extravascular spaces during hemostasis, thrombosis, and tissue repair. The D-dimer antigen is a specific marker of fibrin clot formation and fibrinolysis, which serves as a clinically useful marker for exclusion of VTE, and evaluation of the risk of VTE

recurrence in select populations. Clinicians need to be aware of the heterogeneous nature of the D-dimer antigen and the different performance characteristics of the available assays, in order to make safe and timely therapeutic decisions. There is growing evidence that D-dimer antigen measurements can assist clinicians in numerous other clinical scenarios. Further standardization and accurate communication of assay performance characteristics will allow for effective utilization of this test.

Acknowledgements

S.S.A. is an Assistant Professor at King Abdul Aziz University in Jeddah, Saudi Arabia. The authors would like to thank Ben Hulkower and Mariam Ezz for their help with the figures.

Authorship

Contribution: S.S.A. wrote the manuscript, N.S.K. revised and edited the manuscript and C.S.G. co-wrote and revised the manuscript.

Conflict-of-interest disclosure: The authors declare no competing financial interests.

References

1. Blomback B, Hessel B, Hogg D, Therkildsen L. A two-step fibrinogen--fibrin transition in blood coagulation. *Nature*. 1978;275:501-505.
2. Mosesson MW. Fibrinogen and fibrin structure and functions. *J Thromb Haemost*. 2005;3:1894-1904.
3. Laudano AP, Doolittle RF. Synthetic peptide derivatives that bind to fibrinogen and prevent the polymerization of fibrin monomers. *Proc Natl Acad Sci U S A*. 1978;75:3085-3089.
4. Fowler WE, Erickson HP, Hantgan RR, McDonagh J, Hermans J. Cross-linked fibrinogen dimers demonstrate a feature of the molecular packing in fibrin fibers. *Science*. 1981;211:287-289.
5. Doolittle RF, Pandi L. Probing the beta-chain hole of fibrinogen with synthetic peptides that differ at their amino termini. *Biochemistry*. 2007;46:10033-10038.
6. Greenberg CS, Miraglia CC, Rickles FR, Shuman MA. Cleavage of blood coagulation factor XIII and fibrinogen by thrombin during in vitro clotting. *J Clin Invest*. 1985;75:1463-1470.
7. Greenberg CS, Achyuthan KE, Rajagopalan S, Pizzo SV. Characterization of the fibrin polymer structure that accelerates thrombin cleavage of plasma factor XIII. *Arch Biochem Biophys*. 1988;262:142-148.
8. Weitz JI, Leslie B, Hudoba M. Thrombin binds to soluble fibrin degradation products where it is protected from inhibition by heparin-antithrombin but susceptible to inactivation by antithrombin-independent inhibitors. *Circulation*. 1998;97:544-552.
9. Meh DA, Siebenlist KR, Mosesson MW. Identification and characterization of the thrombin binding sites on fibrin. *J Biol Chem*. 1996;271:23121-23125.
10. Shen L, Lorand L. Contribution of fibrin stabilization to clot strength. Supplementation of factor XIII-deficient plasma with the purified zymogen. *J Clin Invest*. 1983;71:1336-1341.
11. Medved L, Nieuwenhuizen W. Molecular mechanisms of initiation of fibrinolysis by fibrin. *Thromb Haemost*. 2003;89:409-419.
12. Gaffney PJ. Distinction between fibrinogen and fibrin degradation products in plasma. *Clin Chim Acta*. 1975;65:109-115.
13. Lane DA, Preston FE, VanRoss ME, Kakkar VV. Characterization of serum fibrinogen and fibrin fragments produced during disseminated intravascular coagulation. *Br J Haematol*. 1978;40:609-615.
14. Gaffney PJ. Fibrin degradation products. A review of structures found in vitro and in vivo. *Ann N Y Acad Sci*. 2001;936:594-610.
15. Marder VJ, Zareba W, Horan JT, Moss AJ, Kanouse JJ. Automated latex agglutination and ELISA testing yield equivalent D-dimer results in patients with recent myocardial infarction. THROMBO Research Investigators. *Thromb Haemost*. 1999;82:1412-1416.
16. Kornberg A, Francis CW, Marder VJ. Plasma crosslinked fibrin polymers: quantitation based on tissue plasminogen activator conversion to D-dimer and measurement in normal and patients with acute thrombotic disorders. *Blood*. 1992;80:709-717.
17. Dempfle CE. Validation, calibration, and specificity of quantitative D-dimer assays. *Semin Vasc Med*. 2005;5:315-320.

18. Gaffney PJ, Edgell T, Creighton-Kempsford LJ, Wheeler S, Tarelli E. Fibrin degradation product (FnDP) assays: analysis of standardization issues and target antigens in plasma. *Br J Haematol.* 1995;90:187-194.
19. Gaffney PJ, Lane DA, Kakkar VV, Brasher M. Characterisation of a soluble D dimer-E complex in crosslinked fibrin digests. *Thromb Res.* 1975;7:89-99.
20. Gaffney PJ, Joe F. The lysis of crosslinked human fibrin by plasmin yields initially a single molecular complex, D dimer-E. *Thromb Res.* 1979;15:673-687.
21. Francis CW, Marder VJ, Barlow GH. Plasmic degradation of crosslinked fibrin. Characterization of new macromolecular soluble complexes and a model of their structure. *J Clin Invest.* 1980;66:1033-1043.
22. Rylatt DB, Blake AS, Cottis LE, et al. An immunoassay for human D dimer using monoclonal antibodies. *Thromb Res.* 1983;31:767-778.
23. Greenberg CS, Devine DV, McCrae KM. Measurement of plasma fibrin D-dimer levels with the use of a monoclonal antibody coupled to latex beads. *Am J Clin Pathol.* 1987;87:94-100.
24. Dempfle CE, Zips S, Ergul H, et al. The Fibrin Assay Comparison Trial (FACT): evaluation of 23 quantitative D-dimer assays as basis for the development of D-dimer calibrators. FACT study group. *Thromb Haemost.* 2001;85:671-678.
25. Meijer P, Haverkate F, Kluft C, de Moerloose P, Verbruggen B, Spannagl M. A model for the harmonisation of test results of different quantitative D-dimer methods. *Thromb Haemost.* 2006;95:567-572.
26. Devine DV, Greenberg CS. Monoclonal antibody to fibrin D-dimer (DD-3B6) recognizes an epitope on the gamma-chain of fragment D. *Am J Clin Pathol.* 1988;89:663-666.
27. Elms MJ, Bunce IH, Bundesen PG, et al. Rapid detection of cross-linked fibrin degradation products in plasma using monoclonal antibody-coated latex particles. *Am J Clin Pathol.* 1986;85:360-364.
28. Mountain D, Jacobs I, Haig A. The VIDAS D-dimer test for venous thromboembolism: a prospective surveillance study shows maintenance of sensitivity and specificity when used in normal clinical practice. *Am J Emerg Med.* 2007;25:464-471.
29. Lippi G, Salvagno GL, Rossi L, Montagnana M, Franchini M, Guidi GC. Analytical performances of the D-dimer assay for the Immulite 2000 automated immunoassay analyser. *Int J Lab Hematol.* 2007;29:415-420.
30. Froehling DA, Daniels PR, Swensen SJ, et al. Evaluation of a quantitative D-dimer latex immunoassay for acute pulmonary embolism diagnosed by computed tomographic angiography. *Mayo Clin Proc.* 2007;82:556-560.
31. Dempfle CE. D-dimer: standardization versus harmonization. *Thromb Haemost.* 2006;95:399-400.
32. Perrier A. Review: The Wells clinical prediction guide and D-dimer testing predict deep vein thrombosis. *Evid Based Med.* 2006;11:119.
33. Kruip MJ, Slob MJ, Schijen JH, van der Heul C, Buller HR. Use of a clinical decision rule in combination with D-dimer concentration in diagnostic workup of patients with suspected pulmonary embolism: a prospective management study. *Arch Intern Med.* 2002;162:1631-1635.
34. Pittet JL, de Moerloose P, Reber G, et al. VIDAS D-dimer: fast quantitative ELISA for measuring D-dimer in plasma. *Clin Chem.* 1996;42:410-415.
35. Scarano L, Bernardi E, Prandoni P, et al. Accuracy of two newly described D-dimer tests in patients with suspected deep venous thrombosis. *Thromb Res.* 1997;86:93-99.

36. Dale S, Gogstad GO, Brosstad F, et al. Comparison of three D-dimer assays for the diagnosis of DVT:ELISA, latex and an immunofiltration assay (NycoCard D-Dimer). *Thromb Haemost.* 1994;71:270-274.
37. Curtin N, Highe G, Harris M, Braunstein A, Demattia F, Coss L. Extensive evaluation of the instrumentation laboratory IL test D-Dimer immunoturbidimetric assay on the ACL 9000 determines the D-Dimer cutoff value for reliable exclusion of venous thromboembolism. *Lab Hematol.* 2004;10:88-94.
38. John MA, Elms MJ, O'Reilly EJ, Rylatt DB, Bundesen PG, Hillyard CJ. The simpliRED D dimer test: a novel assay for the detection of crosslinked fibrin degradation products in whole blood. *Thromb Res.* 1990;58:273-281.
39. de Groot MR, van Marwijk Kooy M, Pouwels JG, Engelage AH, Kuipers BF, Buller HR. The use of a rapid D-dimer blood test in the diagnostic work-up for pulmonary embolism: a management study. *Thromb Haemost.* 1999;82:1588-1592.
40. Di Nisio M, Squizzato A, Rutjes AW, Buller HR, Zwinderman AH, Bossuyt PM. Diagnostic accuracy of D-dimer test for exclusion of venous thromboembolism: a systematic review. *J Thromb Haemost.* 2007;5:296-304.
41. Lowe GD. Fibrin D-dimer and cardiovascular risk. *Semin Vasc Med.* 2005;5:387-398.
42. Rathbun SW, Whitsett TL, Vesely SK, Raskob GE. Clinical utility of D-dimer in patients with suspected pulmonary embolism and nondiagnostic lung scans or negative CT findings. *Chest.* 2004;125:851-855.
43. Wells PS. Integrated strategies for the diagnosis of venous thromboembolism. *J Thromb Haemost.* 2007;5:41-50.
44. Elms MJ, Bunce IH, Bundesen PG, et al. Measurement of crosslinked fibrin degradation products - an immunoassay using monoclonal antibodies. *Thromb Haemost.* 1983;50:591-594.
45. Stein PD, Hull RD, Patel KC, et al. D-dimer for the exclusion of acute venous thrombosis and pulmonary embolism: a systematic review. *Ann Intern Med.* 2004;140:589-602.
46. Arnason T, Wells PS, Forster AJ. Appropriateness of diagnostic strategies for evaluating suspected venous thromboembolism. *Thromb Haemost.* 2007;97:195-201.
47. Wells PS, Anderson DR, Rodger M, et al. Derivation of a simple clinical model to categorize patients probability of pulmonary embolism: increasing the models utility with the SimpliRED D-dimer. *Thromb Haemost.* 2000;83:416-420.
48. Gibson NS, Sohne M, Kruip MJ, et al. Further validation and simplification of the Wells clinical decision rule in pulmonary embolism. *Thromb Haemost.* 2008;99:229-234.
49. Linkins LA. Reproducibility of Pretest Assessment in Suspected Pulmonary Embolism. *Lab Med.* 2008;39 361-364.
50. Stein PD, Beemath A, Olson RE. Trends in the incidence of pulmonary embolism and deep venous thrombosis in hospitalized patients. *Am J Cardiol.* 2005;95:1525-1526.
51. Brotman DJ, Segal JB, Jani JT, Petty BG, Kickler TS. Limitations of D-dimer testing in unselected inpatients with suspected venous thromboembolism. *Am J Med.* 2003;114:276-282.
52. Meesters EW, Hansen H, Spronk HM, et al. The inflammation and coagulation cross-talk in patients with systemic lupus erythematosus. *Blood Coagul Fibrinolysis.* 2007;18:21-28.

53. Brenner B, Francis CW, Totterman S, et al. Quantitation of venous clot lysis with the D-dimer immunoassay during fibrinolytic therapy requires correction for soluble fibrin degradation. *Circulation*. 1990;81:1818-1825.
54. Iba T, M D, Gando S, M D, Murata A, M D, et al. Predicting the Severity of Systemic Inflammatory Response Syndrome (SIRS)-Associated Coagulopathy With Hemostatic Molecular Markers and Vascular Endothelial Injury Markers. *J Trauma*. 2007;63:1093-1098.
55. Cohen HJ, Harris T, Pieper CF. Coagulation and activation of inflammatory pathways in the development of functional decline and mortality in the elderly. *Am J Med*. 2003;114:180-187.
56. Harper PL, Theakston E, Ahmed J, Ockelford P. D-dimer concentration increases with age reducing the clinical value of the D-dimer assay in the elderly. *Intern Med J*. 2007;37:607-613.
57. Legnani C, Palareti G, Cosmi B, et al. Different cut-off values of quantitative D-dimer methods to predict the risk of venous thromboembolism recurrence: a post-hoc analysis of the PROLONG study. *Hematologica*. 2008;93:900-907.
58. Couturaud F, Kearon C, Bates SM, Ginsberg JS. Decrease in sensitivity of D-dimer for acute venous thromboembolism after starting anticoagulant therapy. *Blood Coagul Fibrinolysis*. 2002;13:241-246.
59. Ranji SR, Shojania KG, Trowbridge RL, Auerbach AD. Impact of reliance on CT pulmonary angiography on diagnosis of pulmonary embolism: a Bayesian analysis. *J Hosp Med*. 2006;1:81-87.
60. van Belle A, Buller HR, Huisman MV, et al. Effectiveness of managing suspected pulmonary embolism using an algorithm combining clinical probability, D-dimer testing, and computed tomography. *JAMA*. 2006;295:172-179.
61. Wells PS, Anderson DR, Rodger M, et al. Excluding pulmonary embolism at the bedside without diagnostic imaging: management of patients with suspected pulmonary embolism presenting to the emergency department by using a simple clinical model and d-dimer. *Ann Intern Med*. 2001;135:98-107.
62. Söderberg M, Brohult J, Jorfeldt L, Lärfars G. The use of d-dimer testing and Wells score in patients with high probability for acute pulmonary embolism. *J Eval Clin Pract*. 2008 Aug 28. [Epub ahead of print].
63. Douma RA, Kamphuisen PW, Huisman MV, Buller HR. False normal results on multidetector-row spiral computed tomography in patients with high clinical probability of pulmonary embolism. *J Thromb Haemost*. 2008;6:1978-1979.
64. Stein PD, Fowler SE, Goodman LR, et al. Multidetector Computed Tomography for Acute Pulmonary Embolism. *N Engl J Med*. 2006;354:2317-2327.
65. Galle C, Papazyan JP, Miron MJ, Slosman D, Bounameaux H, Perrier A. Prediction of pulmonary embolism extent by clinical findings, D-dimer level and deep vein thrombosis shown by ultrasound. *Thromb Haemost*. 2001;86:1156-1160.
66. Tick LW, Nijkeuter M, Kramer MH, et al. High D-dimer levels increase the likelihood of pulmonary embolism. *J Int Med*. 2008;264 195-200.
67. Schutgens RE, Esseboom EU, Snijder RJ, et al. Low molecular weight heparin (dalteparin) is equally effective as unfractionated heparin in reducing coagulation activity and perfusion abnormalities during the early treatment of pulmonary embolism. *J Lab Clin Med*. 2004;144:100-107.
68. Bates S, Kearon C, Kahn S, et al. A Negative D-dimer Excludes Recurrent Deep Vein Thrombosis: Results of a Multicentre Management Study. *Blood*. 2007;110:698.
69. Palareti G, Cosmi B, Legnani C, et al. D-dimer testing to determine the duration of anticoagulation therapy. *N Engl J Med*. 2006;355:1780-1789.

70. Lee AY, Julian JA, Levine MN, et al. Clinical utility of a rapid whole-blood D-dimer assay in patients with cancer who present with suspected acute deep venous thrombosis. *Ann Intern Med.* 1999;131:417-423.
71. Carrier M, Lee A Y, Bates S M, Anderson D R, Wells P S. Accuracy and usefulness of a clinical prediction rule and D-dimer testing in excluding deep vein thrombosis in cancer patients. *Thromb Res.* 2008 Jun 14.[Epub ahead of print].
72. Righini M, Le Gal G, De Lucia S, et al. Clinical usefulness of D-dimer testing in cancer patients with suspected pulmonary embolism. *Thromb Haemost.* 2006;95:715-719.
73. King V, Vaze AA, Moskowicz CS, Smith LJ, Ginsberg MS. D-Dimer Assay to Exclude Pulmonary Embolism in High-Risk Oncologic Population: Correlation with CT Pulmonary Angiography in an Urgent Care Setting. *Radiology.* 2008;247:854-861.
74. Eichinger S. D-dimer testing in pregnancy. *Semin Vasc Med.* 2005;5:375-378.
75. Chan W-S, Chunilal S, Lee A, Crowther M, Rodger M, Ginsberg JS. A Red Blood Cell Agglutination D-Dimer Test to Exclude Deep Venous Thrombosis in Pregnancy. *Ann Intern Med.* 2007;147:165-170.
76. Stein PD, Woodard PK, Weg JG, et al. Diagnostic pathways in acute pulmonary embolism: recommendations of the PIOPED II investigators. *Am J Med.* 2006;119:1048-1055.
77. Taylor FB, Jr., Toh CH, Hoots WK, et al. Towards definition, clinical and laboratory criteria, and a scoring system for disseminated intravascular coagulation. *Thromb Haemost.* 2001;86:1327-1330.
78. Wada H, Gabazza EC, Asakura H, et al. Comparison of diagnostic criteria for disseminated intravascular coagulation (DIC): diagnostic criteria of the International Society of Thrombosis and Hemostasis and of the Japanese Ministry of Health and Welfare for overt DIC. *Am J Hematol.* 2003;74:17-22.
79. Hayakawa M, Gando S, Hoshino H. A Prospective comparison of new Japanese criteria for disseminated intravascular coagulation: new Japanese criteria versus ISTH criteria. *Clin Appl Thromb Hemost.* 2007;13:172-181.
80. Voves C, Wuillemin WA, Zeerleder S. International Society on Thrombosis and Haemostasis score for overt disseminated intravascular coagulation predicts organ dysfunction and fatality in sepsis patients. *Blood Coagul Fibrinolysis.* 2006;17:445-451.
81. Dempfle CE. Disseminated intravascular coagulation and coagulation disorders. *Curr Opin Anaesthesiol.* 2004;17:125-129.
82. Dempfle CE. The use of soluble fibrin in evaluating the acute and chronic hypercoagulable state. *Thromb Haemost.* 1999;82:673-683.
83. Sodeck G, Domanovits H, Schillinger M, et al. D-Dimer in ruling out acute aortic dissection: a systematic review and prospective cohort study. *Eur Heart J.* 2007.
84. Nadir Y, Hoffman R, Brenner B. Drug-related thrombosis in hematologic malignancies. *Rev Clin Exp Hematol.* 2004;8:E4.
85. Phrommintikul A, Haas SJ, Elsik M, Krum H. Mortality and target haemoglobin concentrations in anaemic patients with chronic kidney disease treated with erythropoietin: a meta-analysis. *Lancet.* 2007;369:381-388.
86. Bennett CL, Silver SM, Djulbegovic B, et al. Venous thromboembolism and mortality associated with recombinant erythropoietin and darbepoetin administration for the treatment of cancer-associated anemia. *JAMA.* 2008;299:914-924.
87. Shibata J, Hasegawa J, Siemens H-J, et al. Hemostasis and coagulation at a hematocrit level of 0.85: functional consequences of erythrocytosis. *Blood* 2003;101:4416-4422.

88. Christensson AG, Danielson BG, Lethagen SR, Christensson AG, Danielson BG, Lethagen SR. Normalization of haemoglobin concentration with recombinant erythropoietin has minimal effect on blood haemostasis. *Nephrol Dial Transplant*. 2001;16:313-319.
89. Canales MA, Arrieta R, Gomez-Rioja R, Diez J, Jimenez-Yuste V, Hernandez-Navarro F. Induction of a hypercoagulability state and endothelial cell activation by granulocyte colony-stimulating factor in peripheral blood stem cell donors. *J Hematother Stem Cell Res*. 2002;11:675-681.
90. Topcuoglu P, Arat M, Dalva K, Ozcan M. Administration of granulocyte-colony-stimulating factor for allogeneic hematopoietic cell collection may induce the tissue factor-dependent pathway in healthy donors. *Bone Marrow Transplant*. 2004;33:171-176.
91. Stephens LC, Haire WD, Schmit-Pokorny K, Kessinger A, Kotulak G. Granulocyte macrophage colony stimulating factor: high incidence of apheresis catheter thrombosis during peripheral stem cell collection. *Bone Marrow Transplant*. 1993;11:51-54.
92. Galimberti R, Pietropaolo N, Galimberti G, Kowalczyk A. Adult purpura fulminans associated with staphylococcal infection and administration of colony-stimulating factors. *Eur J Dermatol*. 2003;13:95-97.
93. Cappellini MD. Coagulation in the pathophysiology of hemolytic anemias. *Hematology Am Soc Hematol Educ Program*. 2007;2007:74-78.
94. Ataga KI, Key NS. Hypercoagulability in sickle cell disease: new approaches to an old problem. *Hematology Am Soc Hematol Educ Program*. 2007;2007:91-96.
95. Stuart MJ, Setty BN. Hemostatic alterations in sickle cell disease: relationships to disease pathophysiology. *Pediatr Pathol Mol Med*. 2001;20:27-46.
96. Austin H, Key NS, Benson JM, et al. Sickle cell trait and the risk of venous thromboembolism among blacks. *Blood*. 2007;110:908-912.
97. Ittyerah R, Alkjaersig N, Fletcher A, Chaplin H. Coagulation factor XIII concentration in sickle-cell disease. *J Lab Clin Med*. 1976;88:546-554.
98. Francis RB, Jr. Elevated fibrin D-dimer fragment in sickle cell anemia: evidence for activation of coagulation during the steady state as well as in painful crisis. *Haemostasis*. 1989;19:105-111.
99. Mohan JS, Lip GY, Wright J, Bareford D, Blann AD. Plasma levels of tissue factor and soluble E-selectin in sickle cell disease: relationship to genotype and to inflammation. *Blood Coagul Fibrinolysis*. 2005;16:209-214.
100. Gillis S, Cappellini MD, Goldfarb A, Ciceri L, Fiorelli G, Rachmilewitz EA. Pulmonary thromboembolism in thalassemia intermedia patients. *Haematologica*. 1999;84:959-960.
101. Cappellini MD, Robbiolo L, Bottasso BM, Coppola R, Fiorelli G, Mannucci AP. Venous thromboembolism and hypercoagulability in splenectomized patients with thalassaemia intermedia. *Br J Haematol*. 2000;111:467-473.
102. Tripatara A, Jetsrisuparb A, Teeratakulpisarn J, Kuaha K. Hemostatic alterations in splenectomized and non-splenectomized patients with [beta]-thalassemia/hemoglobin E disease. *Thromb Res*. 2007;120:805-810.
103. Streetly M, Hunt BJ, Parmar K, Jones R, Zeldis J, Schey S. Markers of endothelial and haemostatic function in the treatment of relapsed myeloma with the immunomodulatory agent ActimidTM (CC-4047) and their relationship with venous thrombosis. *Eur J Haematol*. 2005;74:293-296.
104. Haddad TC, Greeno EW. Chemotherapy-induced thrombosis. *Thromb Res*. 2006;118:555-568.

105. Winkler U, Jensen M, Manzke O, Schulz H, Diehl V, Engert A. Cytokine-release syndrome in patients with B-cell chronic lymphocytic leukemia and high lymphocyte counts after treatment with an anti-CD20 monoclonal antibody (rituximab, IDEC-C2B8). *Blood*. 1999;94:2217-2224.
106. Weitz IC, Israel VK, Waisman JR, Presant CA, Rochanda L, Liebman HA. Chemotherapy-induced activation of hemostasis: effect of a low molecular weight heparin (dalteparin sodium) on plasma markers of hemostatic activation. *Thromb Haemost*. 2002;88:213-220.
107. Matsumoto T, Wada H, Nishiyama H, et al. Hemostatic abnormalities and changes following bone marrow transplantation. *Clin Appl Thromb Hemost*. 2004;10:341-350.
108. Wells PS, Anderson DR, Rodger M, et al. Evaluation of D-Dimer in the Diagnosis of Suspected Deep-Vein Thrombosis. *N Engl J Med*. 2003;349:1227-1235.
109. Indik JH, Alpert JS. Detection of pulmonary embolism by D-dimer assay, spiral computed tomography, and magnetic resonance imaging. *Prog Cardiovasc Dis*. 2000;42:261-272.
110. Bounameaux H. Review: ELISA D-dimer is sensitive but not specific in diagnosing pulmonary embolism in an ambulatory clinical setting. *ACP J Club*. 2003;138:24.
111. Fukuda T, Kasai H, Kusano T, Shimazu C, Kawasugi K, Miyazawa Y. A rapid and quantitative D-Dimer assay in whole blood and plasma on the point-of-care PATHFAST analyzer. *Thromb Res*. 2007;120:695-701.
112. Dempfle CE, Suvajac N, Elmas E, Borggreffe M. Performance evaluation of a new rapid quantitative assay system for measurement of D-dimer in plasma and whole blood: PATHFAST D-dimer. *Thromb Res*. 2007;120:591-596.
113. Killick SB, Pentek PG, Mercieca JE, Clarke MF, Bevan DH. Comparison of immunofiltration assay of plasma D-dimer with diagnostic imaging in deep vein thrombosis. *Br J Haematol*. 1997;96:846-849.
114. Veitl M, Hamwi A, Kurtaran A, Virgolini I, Vukovich T. Comparison of four rapid D-Dimer tests for diagnosis of pulmonary embolism. *Thromb Res*. 1996;82:399-407.
115. K. Sukhu JB, P. M. Baker, D. M. Keeling. Comparison of an immunoturbidometric method (STalia D-DI) with an established enzyme linked fluorescent assay (VIDAS) d-dimer for the exclusion of venous thromboembolism. *Int J Lab Hematol*. 2008;30:200-204.
116. Toulon P, Lecourvoisier C, Meyniard O. Evaluation of a rapid qualitative immuno-chromatography D-dimer assay (Simplify D-dimer) for the exclusion of pulmonary embolism in symptomatic outpatients with a low and intermediate pretest probability. Comparison with two automated quantitative assays. *Thromb Res*. 2008 Aug 8.[Epub ahead of print]
117. Righini M, Perrier A, de Moerloose P, Bounameaux H. D-dimer for venous thromboembolism diagnosis: twenty years later. *J Thromb Haemost*. 2008;6:1059-1071.

Figure Legends

Figure 1. The step-wise process of Fibrin polymerization. The three major steps of D-dimer antigen formation are shown in figure 1. **I.** The fibrinogen molecule is cleaved by thrombin to produce fibrin monomers. These monomers associate with fibrinogen or fibrin to form protofibrils. They are held together by noncovalent forces shown as dotted lines between the intermolecular D-domain and D-E domains. **II.** Factor XIIIa formed by thrombin on fibrin polymers then covalently attaches D domains and inserts a covalent intermolecular linkage designated by the diamond shaped figure. **III.** Plasmin must degrade fibrin at multiple sites to release fibrin degradation products which then expose the D-dimer antigen epitope. The initial fragments are high molecular weight complexes followed by further degradation to produce the terminal D-dimer-E complex which contains the dimer antigen. The three phases of this process are labelled on the left side of the diagram and the different molecular forms of fibrinogen and its subsequent transformation by thrombin, factor XIIIa and plasmin are shown on the left side of the diagram. This is a schematic representation of just one protofibril. Multiple protofibrils are aligned side by side and undergo branching to make a fibrin gel.

Figure 2. The dynamics of D-dimer formation. Thrombin converts plasma fibrinogen to fibrin monomers. Thrombin then remains associated with fibrin and activates factor XIII which circulates bound to fibrinogen. Factor XIIIa is formed as fibrin polymerizes and continues after fibrin has formed an insoluble gel. The D-dimer antigen is formed by the sequential action of thrombin, FXIIIa and plasmin. Plasmin releases D-dimer antigen from fibrin polymers before and after fibrin gels. Thus, D-dimer antigen as detected by commercially available assays can either be derived from the soluble fibrin polymers before their uptake in the clot or it can be the product of plasmin cleavage of the fibrin clot.

Figure 3. Clinical algorithm for diagnosis of deep vein thrombosis.

Patients with a score of < 2 were considered unlikely and those with a score of ≥ 2 were considered likely to have DVT.¹⁰⁸ Abbreviations: DVT, deep venous thrombosis; CUS, compression ultrasonography.

* Sometimes as in the case of morbid obesity, CUS is not feasible.

Figure 4. Clinical algorithm for diagnosis of pulmonary embolism. The diagnosis of PE was unlikely in patients scoring ≤ 4 , using the Wells Simplified Clinical Prediction Model, while the diagnosis of PE was likely in those scoring > 4 .⁴⁷ Abbreviations: PE, pulmonary embolism; CTA,

contrast-enhanced computed tomographic angiography; V/Q Scan, ventilation/perfusion scan; CUS, compression ultrasonography.

Figure 1

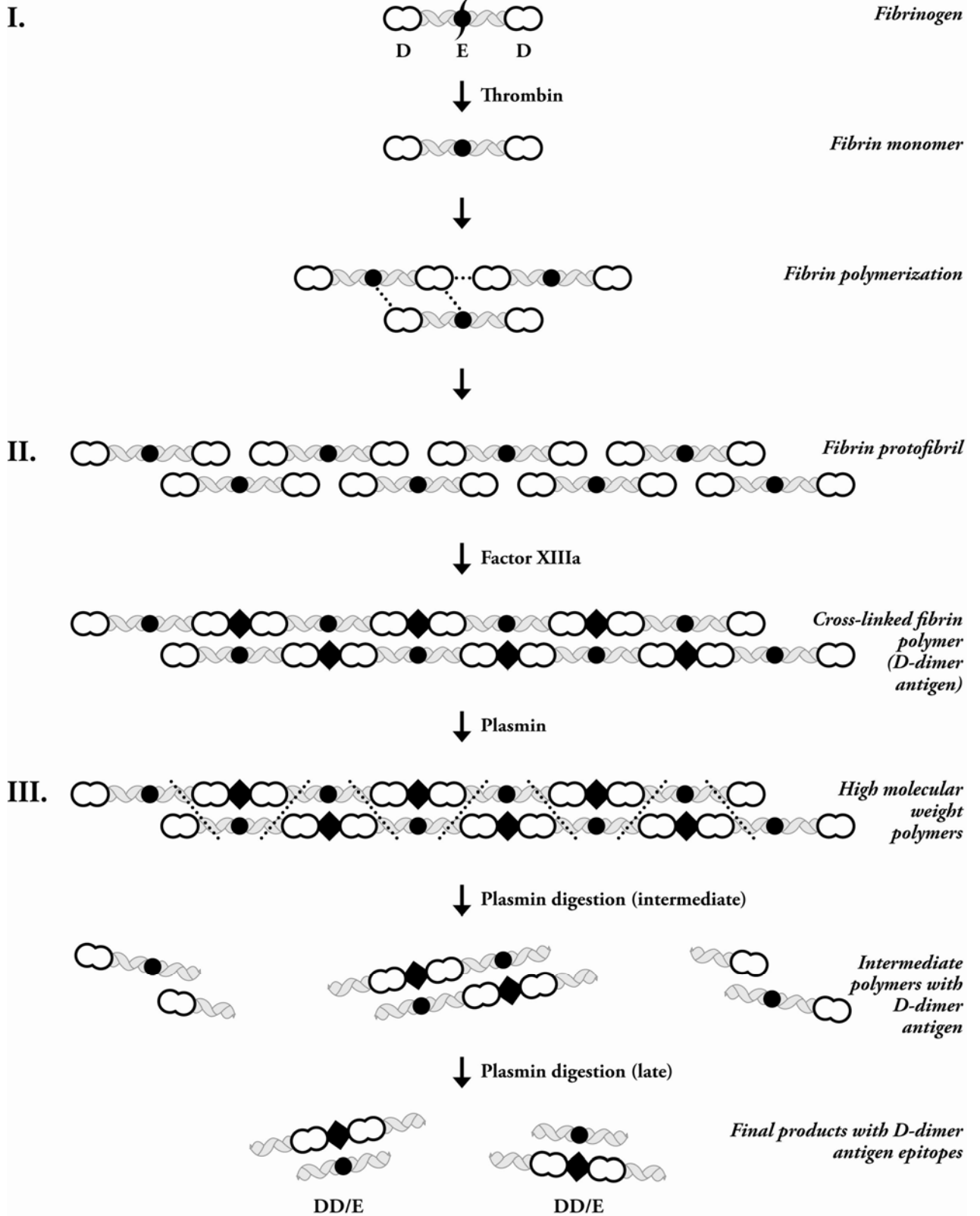


Figure 2

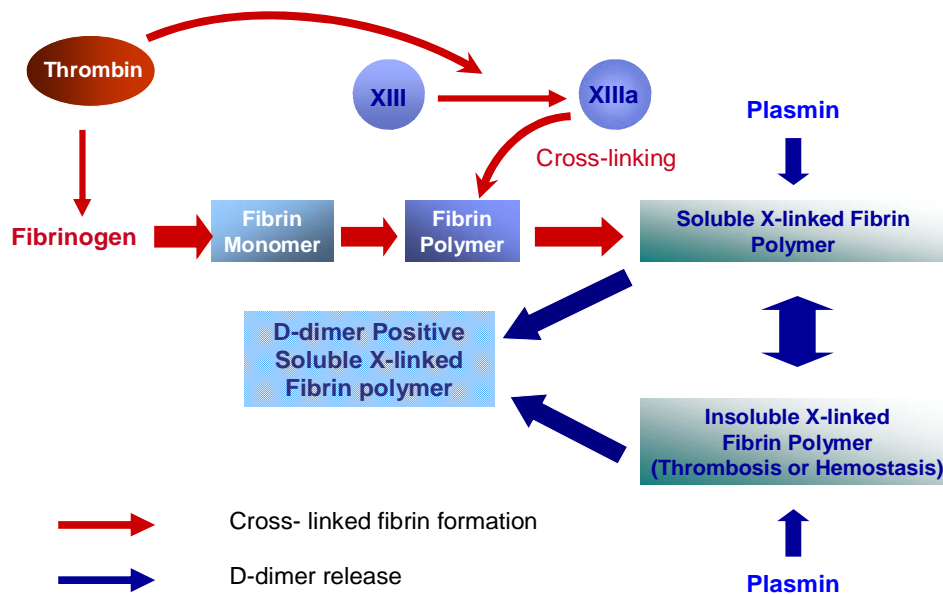


Figure 3

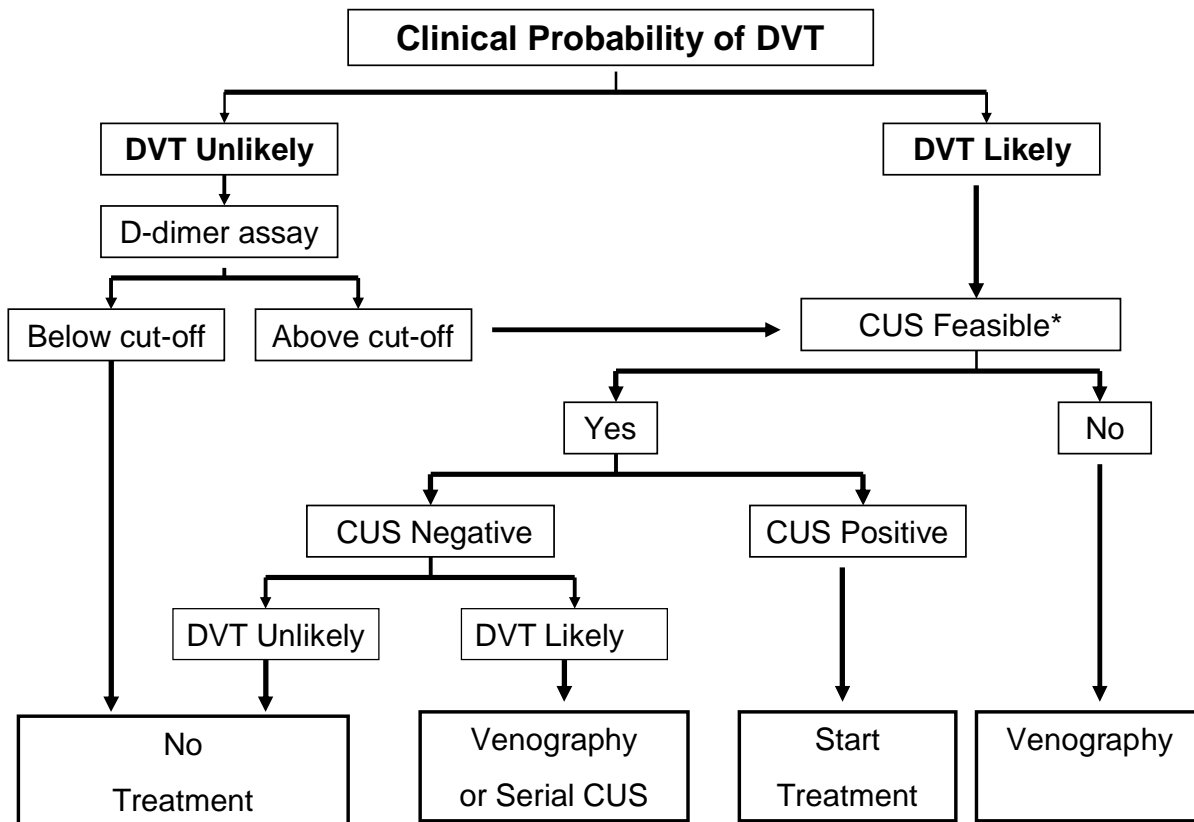


Figure 4

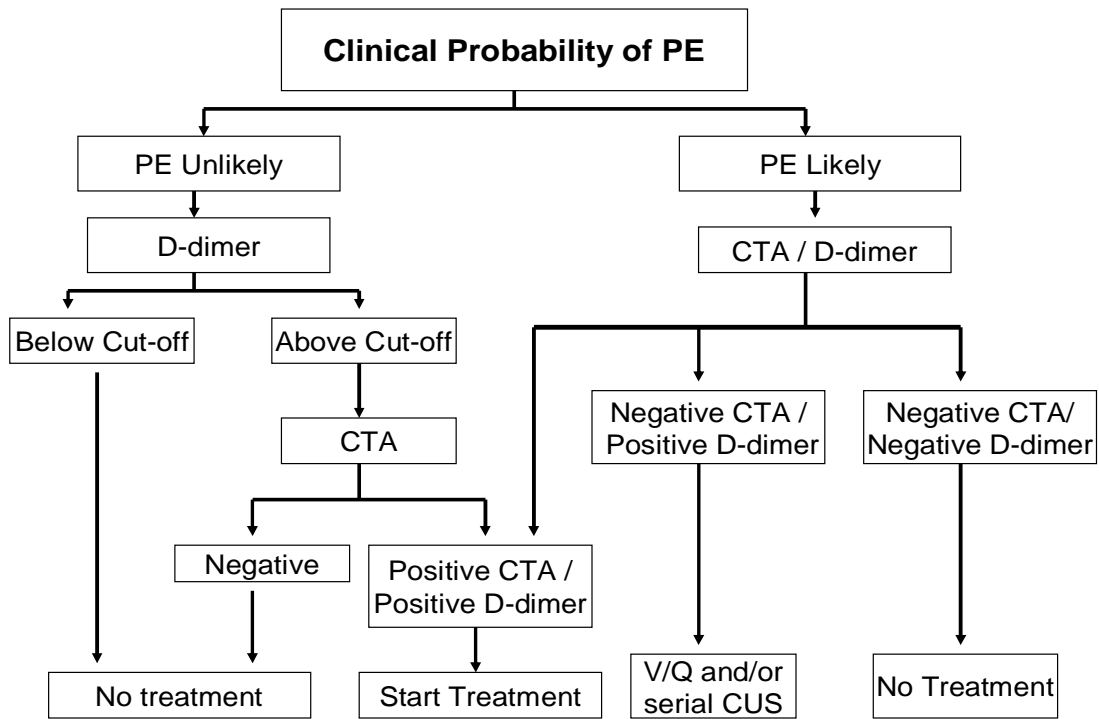


Table 1: Comparison of commercially available D-dimer assays

Technique	Commercial Kits	Sample Type	Sensitivity	Specificity	Automation	
Microplate ELISA*	Asserachrom® Ddi (Stago)	Plasma	High	Low	Manual	Indik et al ¹⁰⁹ , Bournameaux et al. ¹¹⁰
ELISA and Fluorescence (ELFA)	Enzygnost® (Dade-Behring)* Vidas® DD (Biomérieux) AxSym® D-dimer (Abbott) Stratus® D-dimer (Dade-Behring)	Plasma	High	Low	Automated	Mountain et al ²⁸ , van Belle et al. ⁶⁰
ELISA and Chemiluminescence	Immolute (Siemens) Pathfast (Mitsubishi)	Plasma	High	Low	Automated	Fukuda et al ¹¹¹ , Dempfle et al. ¹¹²
Immunofiltration and sandwich-type	NycoCard® (Nycomed), Cardiac D-dimer® (Roche)	Plasma	High	Low-intermediate	Automated	Scarano et al ³⁵ , Killick et al. ¹¹³
Semi-quantitative latex agglutination	Dimertest® latex, (IL); Fibrinosticon®, (bioMérieux) Ddi latex®, (Stago)	Plasma	Intermediate	Intermediate	Manual	Veitl et al ¹¹⁴ , Sukhu et al. ¹¹⁵
Manual whole-blood agglutination	SimpliRED® (Agen) Clearview Simplify D-dimer® (Agen)	Whole blood	High-intermediate	Intermediate	Manual	de Groot et al) ³⁹ , Toulon et al. ¹¹⁶
Second-generation latex agglutination (immunoturbidimetric)	TinaQuant® (Roche) Liatest® (Stago) Automated Dimertest® (Agen) MDA® D-dimer (bioMérieux) Turbiquant® (Dade-Behring)	Plasma	High	Intermediate	Automated	Froehling et al ³⁰ , Curtin et al. ³⁷

Adapted from Righini et al¹¹⁷ with permission. ELISA indicates Enzyme-Linked Immunosorbent Assay.

* This assay can only be performed in batches and has a relatively longer turn around time.