

1. "Three doctors were asked about their opinion about the new medicine." This is an example of:
 - A) implied connection
 - B) suspect sample
 - C) ambiguous average
 - D) detached statistics

2. The following data set (1,8,2,2,7,7,1,8) is said to be:
 - A) Multimodal
 - B) Unimodal
 - C) Bimodal
 - D) No mode

3. "If a researcher counts the number of kids who have special needs." What type of study is this?
 - A) Independent study
 - B) Experimental study
 - C) Quasi-experimental study
 - D) Observational study

4. "Tofel IBT test." This is an example of which level of measurements?
 - A) Continuous
 - B) Ratio
 - C) Interval
 - D) Discrete

5. Using the class 20–38, what is the class midpoint?
 - A) 9
 - B) 29
 - C) 58
 - D) 18

6. "A History class recorded its highest score at 85 and lowest score at 55. Use this information to find the first class if we want to construct a grouped frequency distribution using 7 classes.
 - A) 55 - 85
 - B) 55 - 58
 - C) 55 - 59
 - D) 55 – 60

7. The stem part for the data value 146 is...

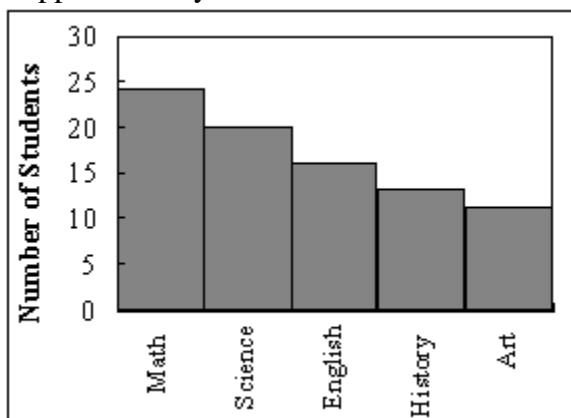
- A) 6
- B) 14
- C) 46
- D) 1

8. The costs and the numbers of three models of bicycles are shown here. Find the weighted mean of the costs of the models

Model	Number	Cost
A	6	\$700
B	2	\$150
C	8	\$950

- A) \$4033.3
- B) \$112.5
- C) \$5.3
- D) \$756.3

9. The total number of frequency in the data set which its Pareto chart is shown below is approximately:



- A) 83
- B) 5
- C) 24
- D) 30

A survey of your friends to find which kind of movie they liked a lot:

Favorite type of movie	Comedy	Action	Romance	Drama
Relative Frequency	0.2	0.25	0.3	0.25

10. Find the degree of friends like comedy movie is---

- A) 72°
- B) 0.2
- C) 20°
- D) 90°